

1986

ANNUAL REPORT

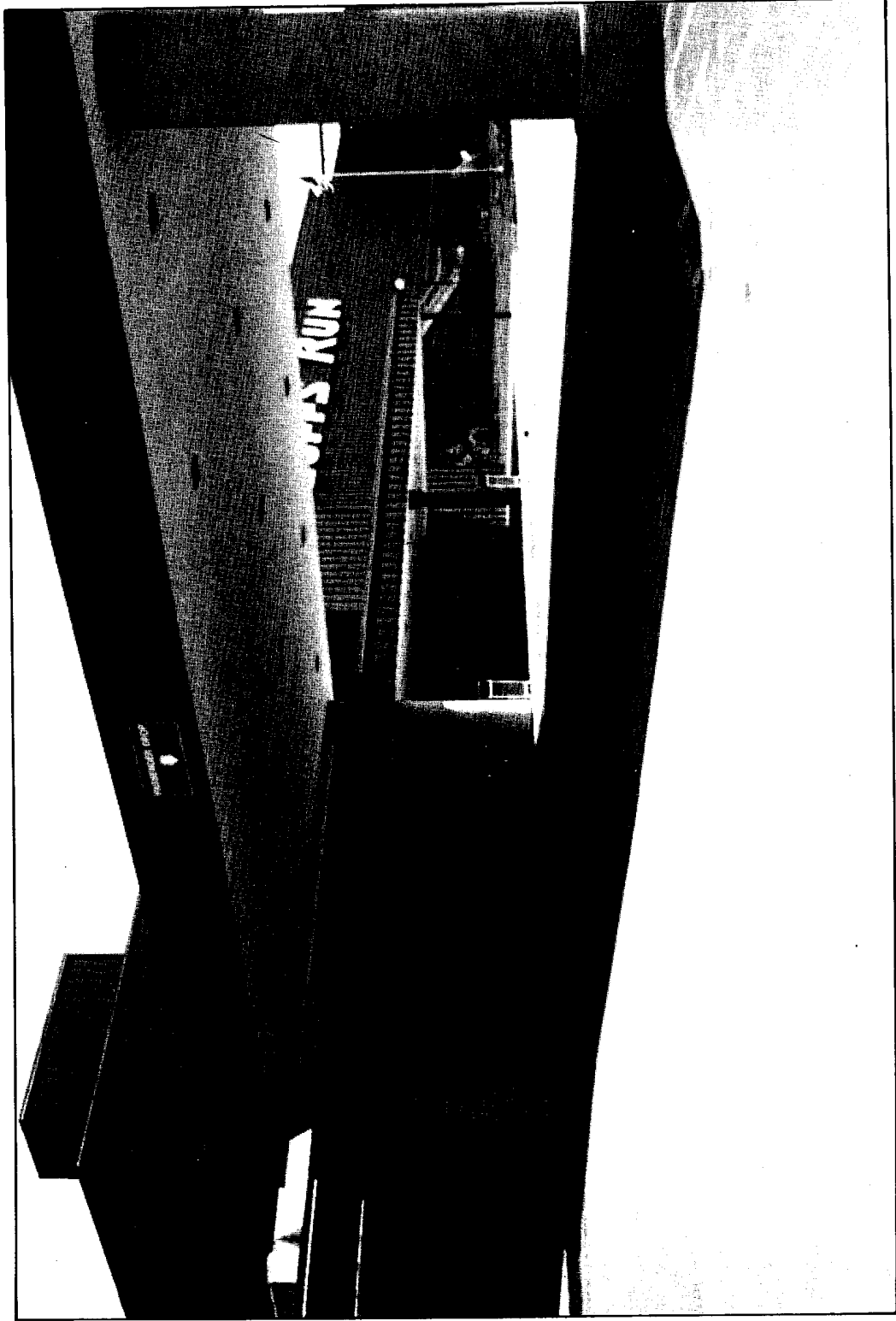
OF THE

IOWA STATE

RACING COMMISSION

TABLE OF CONTENTS

	Page
Introduction of Report	3
Letter to the Governor	5
Commission Meetings	6
Projections for 1987	8
Financial Position	10
Iowa Breeder's Fund/ Iowa Supplements	11
Laboratory Testing	13
Harness Racing at the Fairs	15
Season Summary for Dubuque Greyhound Park	17
Season Summary for Bluffs Run	19
Season Summary for Waterloo Greyhound Park	21
Receipts and Disbursements	22
Statement of Expenditures	23
Statement of Occupational Greyhound License Fees	24
Statement of Occupational Standardbred License Fees	25
Iowa's Wagering Dollar	26
Commission Members	27



Bluffs Run, Council Bluffs, Iowa

INTRODUCTION

IOWA STATE RACING COMMISSION

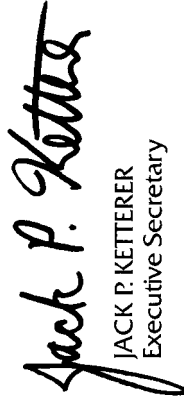
Wallace State Office Building
Des Moines, Iowa 50319

The Honorable Terry E. Branstad
Governor of the State of Iowa
State House
Des Moines, Iowa 50319

Dear Governor Branstad:

In compliance with Chapter 99D, Iowa Code, the Iowa State Racing Commission submits herewith its Third Annual Report, covering the period of January 1, 1986, through December 31, 1986.

Respectfully yours,


JACK P. KETTERER
Executive Secretary

IOWA STATE RACING COMMISSION

Lawrence F. Scalise, Chairman
L. C. "Bud" Pike, Vice Chairman
Lavonne Mydland, Member

Dr. Sally Brown Prickett, Member
Steve Govern, Member
Jack P. Ketterer, Executive Secretary



Starting Box at Dubuque Greyhound Park

LETTER TO THE GOVERNOR

December 31, 1986

The Honorable Terry E. Branstad
Governor of Iowa
State House
Des Moines, Iowa 50319
Dear Governor Branstad:

On behalf of the Iowa Racing Commission, I am proud to present to you the Commission's Annual Report for the calendar year 1986.

This report covers commission activities, progress and results from operations for the twelve month period from January 1, 1986 to December 31, 1986.

This year marked the first full season of racing at Dubuque Greyhound Park. Total pari-mutuel wagering rose 50% with a 19% increase in racing dates.

This year also marked the opening of new facilities at Council Bluffs and Waterloo. Bluffs Run finished the 1986 season ranked fifth in total wagering in the United States among greyhound tracks.

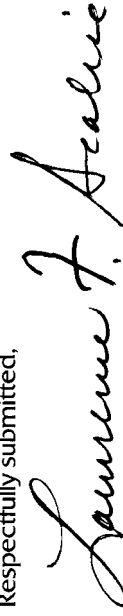
Nearly \$10 million in state pari-mutuel taxes was generated by Iowa racetracks in 1986. Another \$2 million in pari-mutuel taxes went to Iowa cities and counties. Millions of dollars of new construction occurred in the cities with pari-mutuel racetracks. The consensus of opinion is that the racetrack provided the catalyst for the new activity in each community.

There were over 1,000 jobs created directly at the racing facilities and hundreds of other jobs were indirectly fostered by the economic activity fueled by the tracks.

Bluffs Run and Dubuque Greyhound Park provided tremendous attractions for Iowa tourism. Over 50% of the one and three quarter million patrons attending the races at those tracks were from out-of-state. The commission jointly participates with the tracks in travel and trade shows and with the Iowa Division of Tourism to reverse the outward flow of tourist dollars that occurred for many years.

The commission will strive to provide a climate for stable, economic growth for Iowa racetracks and maintain the integrity needed in this industry.

Respectfully submitted,



LAWRENCE F. SCALISE
Chairman

COMMISSION MEETINGS

During 1986, the Iowa Racing Commission met 11 times. In addition, two telephonic meetings and two worksession meetings were held, along with two contested hearings on occupational licenses. Minutes of each meeting are kept on file in the Commission office, and are available to the public upon request. Highlights of the meetings follow:

January 14, 1986 — Adopted Chapter 10 "Application for Tax Credit for Horse Racing Licensees," and amended Chapters 7 and 8. Progress updates were heard from the National Cattle Congress, and the Racing Association of Central Iowa. Executive Session was held in accordance with 21.5(1)a", Code of Iowa to discuss background investigations.

February 18, 1986 — Telephonic meeting was held. Approval of management, lease and licensing agreements were given to the Racing Association of Central Iowa.

February 21, 1986 — Emergency adopted rule changes to Chapter 8. Granted racing dates of October 15, 1986, to April 15, 1987, to the National Cattle Congress, and approved their grading system, and supplementary payment program to Iowa Whelped Greyhounds. Executive Session was held to discuss background investigations.

April 1, 1986 — Progress reports were given by the National Cattle Congress, and the Racing Association of Central Iowa. Rule changes to Chapters 8 and 9 were adopted, and a Notice of Intended Action was filed. Executive Session was held.

May 22, 1986 — Approved officials, minimum purse structure, and bonds for the Iowa Fair Horse Racing Association. The Commission initiated proceedings for the revocation of the license issued to the Racing Association of Central Iowa. The Racing Commission became the Division of Racing and Gaming, under the Department of Commerce, pursuant to S.F. 2175, adopted by the 1986 General Assembly. Executive Secretary, Jack Ketterer, was appointed the Administrator of the Division.

June 17, 1986 — A hearing was held to determine if the Racing Association of Central Iowa's license should be revoked. Richard Wilkey was appointed president of the Association. Mr. Wilkey stated that he planned to enlist the aid of Polk County to study the feasibility of a horse racetrack in Altoona, Iowa.

June 17 1986 — Worksession meeting was held. Technical rule changes to Chapters 7 and 8 were discussed, along with possibilities of another licensee building a horse racetrack, should Mr. Wilkey fail in his endeavor. Possibility of \$50,000 in surplus funds going to Iowa State University College of Veterinary Medicine for canine research was also discussed.

July 2, 1986 — Richard Wilkey gave a progress report of the Racing Association of Central Iowa. Adopted rule changes to Chapters 7 and 8. Two additional racing dates were granted to Bluffs Run and the Iowa Fair Racing Association for their 1986 racing seasons.

July 25, 1986 — The Racing Commission met in Okoboji, Iowa in conjunction with the Spencer harness races. A resolution was passed authorizing the Administrator of the Racing Commission to retain a CPA firm to prepare an update of a feasibility study completed by Killingsworth and Associates in 1984. July 23, 1986, was declared the monumental date that the total pari-mutuel handle in Iowa reached \$100,000,000. Executive session was held for the purpose of taking up background investigations and security audits.

August 19, 1986 — A tax credit was granted to the Iowa Fair Racing Association, contingent upon documentation of the cost and evidence of indebtedness for permanent improvements. A Director of Greyhound Racing was appointed to oversee state stewards at track locations. Minimum purse, grading system, bonds and takeover structure for Waterloo Greyhound Park were approved. Dr. Switzer of Iowa State University College of Veterinary Medicine reported the use of funds for canine research projects, should surplus funds of \$50,000 be granted. Executive Session was held.

August 19, 1986 — Worksession meeting was held between members of the Polk County Horse Racetrack Study Committee, and Commission members to participate in a question and answer session for the proposed horse racetrack in Altoona.

October 2, 1986 — Telephonic meeting was held. Additional racing dates were granted to Iowa West Racing Association for their 1986 season.

October 15, 1986 — Adopted rule changes to Chapters 7 and 8, and emergency adopted rule changes resulting from Senate File 2175, Reorganization Bill. Racing dates for 1987 were granted to Iowa West Racing Association. (Findings of economic and feasibility studies completed showed favorable.) Executive Session was held.

November 12, 1986 — Rule changes to Chapters 7 and 8, allowing Superfecta wagering, were adopted and a Notice of Intended Action was filed. Cost effectiveness of harness racing was discussed. Harness racing dates and locations were approved by the Commission. State Treasurer, Michael Fitzgerald, was presented a check in the amount of \$3,182,214.30, representing the state's share of tax revenue generated from Dubuque Greyhound Park. Three hearings were held in conjunction with the Commission meeting.

December 18, 1986 — Emergency implemented rule changes to Chapter 8, allowing Superfecta wagering effective June 1. Continued a hearing held at the November 12, meeting. Iowa State University of College of Veterinary Medicine's contract was extended through January 27, 1987, and recommended for the remainder of 1987. Report and discussion from the President of the Iowa Greyhound Association.

PROJECTIONS FOR 1987

Greyhound racing in Iowa should reach the \$200 million level in total mutuel handle and the 2 million level in attendance. These figures would place Iowa fourth nationally among states with greyhound racing.

Over half of the patrons attending the races at Iowa greyhound tracks in 1987, in excess of one million people, will be from out-of-state, making the greyhound tracks one of the largest tourist attractions in Iowa.

Bluffs Run achieved attendance and handle figures of 1,128,203 and \$122,475,778 respectively in its initial season. Two additional weeks of racing in early December were granted by the Commission. The Commission once again extended the racing season at Bluffs Run due to the lack of a competing horse racing facility in central Iowa. Bluffs Run will race an additional four weeks (January 30-February 27) beyond the extended 1986 season. The results should be increases in total attendance and mutuel handle accompanied by slight dips in the daily average due to the diluting effect of the extra days. The total figures should maintain Bluffs Run's position as one of the top five tracks in the country.

Dubuque Greyhound Park achieved attendance and mutuel handle figures of 645,212 and \$63,644,286 respectively. The per capita wager jumped from \$73 in 1985 to \$97 in 1986 as patrons became more familiar with pari-mutuel wagering and greyhound racing. The 1987 season will be a challenging one for Dubuque Greyhound Park. The first season of winter racing at Waterloo Greyhound Park and the resumption of racing this summer at Arlington Park in Arlington Heights, Illinois, will certainly have an effect on 1987 figures.

Waterloo Greyhound Park opened October 15 and experienced a slow start as did Dubuque Greyhound Park in its 1985 opening. Waterloo Greyhound Park was also running against Dubuque Greyhound Park for the first three weeks of the season. By the end of December attendance and per capita wagering had increased. The track should experience further growth in the spring and fall of 1987. The Commission granted Waterloo Greyhound Park identical dates (October 16-April 16) for the 1987-88 season. Although creating an overlap of approximately two weeks at each end with Dubuque Greyhound Park, both tracks agreed with the dates and the Commission will monitor the effects of the overlap in 1987.

Harness Racing was conducted at the State and several county fairs once again in 1986. Many of the county fair locations faced the reality that pari-mutuel racing was not financially viable. Denison, Spencer and Cedar Rapids were dropped by the licensee, Iowa Fair Horse Racing Limited. The 1987 schedule has racing at the Iowa State Fairgrounds in Des Moines from late May until late June followed by one weekend each at Humboldt and What Cheer.

Faced with the revocation of his license by the Commission for lack of progress, Ken Grandquist, sole director of the Racing Association of Central Iowa resigned and appointed Richard Wilkey as sole director. Grandquist also signed his interest in \$40 million of Polk County industrial revenue bonds in an agreement with Wilkey. Wilkey has attempted to build the Altoona horse track on a non-profit basis with Polk County standing behind the bonds. Polk County Board of Supervisors voted to approve lease/purchase and operating agreements for construction of the track in December. Under the present schedule envisioned by the Racing Association of Central Iowa, ground breaking on the new facility could take place in the spring of 1987.

Two major goals of the Commission in 1986 were to be a nationally recognized leader in greyhound racing and to move closer to the realization of a horse track in central Iowa. The Commission feels that those goals have been achieved but they are also ongoing. Another long-range goal of the Commission beginning in 1987 will be to maximize racing revenues to all segments of the industry utilizing all available markets in Iowa and surrounding states.

FINANCIAL POSITION

SOURCE OF REVENUE

During the reporting period, the Iowa Racing Commission operated as a self-funded unit. In Iowa, monies are collected from the racing industry to pay for its own regulation. This money is deposited into a revolving fund controlled by the Racing Commission and expenditures are made from that fund to regulate all aspects of the pari-mutuel racing industry in Iowa. During 1986, \$1,327,036 was received into the Iowa Racing Commission's revolving fund. During that period, the Racing Commission expended \$1,019,991 for regulation of the industry and for research projects to enhance and improve the pari-mutuel industry in the state of Iowa. The remaining \$307,045 was carried over to 1987 to cover future expenses and research projects.

Chapter 99D of the Code of Iowa provides several sources of revenue for the Iowa Racing Commission revolving fund. The racing licensees are taxed at \$200 per day of operation; there is a 50¢ per patron tax imposed; licensees reimburse the Commission for lab fees and audit expenses; fees set by the Commission are charged for occupational licenses; and disciplinary fines set by the Commission are imposed upon those licensees.

During 1986, the Racing Commission collected from those sources \$1,327,036.00 as follows:

Track license fees	\$ 101,300.00
Admission taxes	947,346.00
Occupational license fees	32,035.00
Fines	6,590.00
Statutory Reimbursements	<u>239,765.00</u>
TOTAL	\$1,327,036.00 •

IOWA BREEDER'S FUND

IOWA SUPPLEMENTS

The Department of Agriculture maintains a data base of thoroughbred, standardbred and quarterhorses who have qualified to be Iowa-foaled horses, as well as greyhounds that have qualified as Iowa-whelped dogs according to Iowa Code Chapter 99D.22 and Administrative Rules of the Department of Agriculture.

An amount equal to 12% of the winner's share of any purse won by an Iowa-foaled horse or Iowa-whelped dog is withheld by the licensee from the breakage and paid at the end of the race meeting to the Department of Agriculture. The Department of Agriculture in turn pays the breeder of the winning Iowa-foaled horse or breeder of the Iowa-whelped dog on December 31 of each year. The amounts created from the total breakage were paid out as follows in 1986:

STANDARDBREDS

Breeder's Awards	\$ 2,006.00
Supplements	\$ 22,790.22

GREYHOUNDS

Breeder's Awards	\$ 6,803.77
Supplements	\$ 118,389.60
Iowa Stakes	\$ 112,191.24
Carry-over	\$ 148,183.72

The remainder of the breakage at horse tracks is distributed as purse supplements to the owners of winning Iowa-bred horses.

The remainder of the breakage at greyhound tracks is divided, with 25% funding a stakes race restricted to registered Iowa-whelped greyhounds, and 75% distributed as purse supplements to the owners of winning Iowa-whelped greyhounds. In the cases of the Dubuque Greyhound Park and Bluffs Run, a portion of the purse supplement money was carried over to be used in the following year. This was due to the relatively small number of winning Iowa-whelped greyhounds. This policy will enable supplementary payments to continue at an attractive level for future years when the breeding industry matures in Iowa and there are a large number of Iowa-whelped greyhounds winning races. The use of the carry-over funds is restricted to the Iowa purse supplement program and in the next few years as Iowa-whelped greyhounds begin winning more races, the carry-over funds will be expended and all breakage will be paid on an annual basis. The owners of winning Iowa-whelped greyhounds have earned purses equal to those offered anywhere in the United States.

DUBUQUE GREYHOUND PARK

Breeder's Awards	\$ 33,583.12
Supplements	\$ 212,739.58
Iowa Stakes	\$ 52,675.74
Carry-over	\$ 99,192.31

WATERLOO GREYHOUND PARK

1986 Season ends in April 1987



Veterinarian Examination at Dubuque Greyhound Park.

Insert: Dr. Walter Hyde, State Chemist.

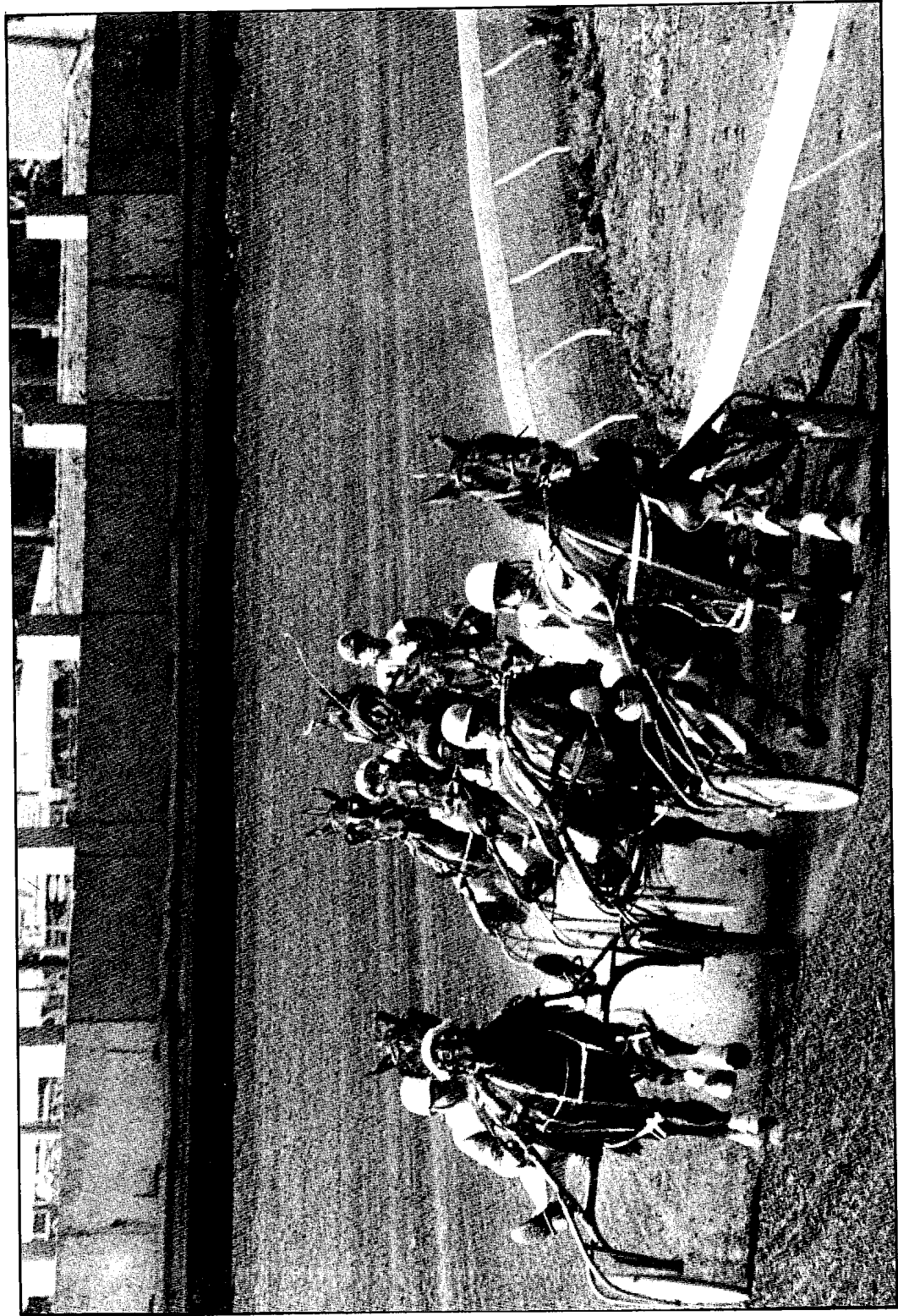
LABORATORY TESTING

The Iowa State Racing Commission's blood/urine testing program is the backbone of the agency's policing functions. This program, which was conducted by Iowa State University Veterinary Diagnostic Lab, of Ames, Iowa, in 1986, is vital to the integrity of Iowa's racing industry.

It is the duty of the Iowa Racing Commission, and its racing chemist, through chemical analysis of blood and urine samples collected from racing animals at the tracks, to insure that foreign substances are not being administered to racing animals pursuant to Iowa Code Chapter 99D.25 of the Iowa Pari-Mutuel Wagering Act. This section of the Act prohibits the administration of any foreign substance that may affect the outcome of a race or interfere with the testing procedures.

Following is a summary of chemical tests conducted by the Iowa State Veterinary Diagnostic Lab in 1986 for the Iowa Racing Commission

	URINE	BLOOD
Horse	247	88
Greyhound		
Bluffs Run	7,272	
Dubuque Greyhound Park	5,086	
Waterloo Greyhound Park	1,987	
Horse		POSITIVE TESTS
Procaine		1
Greyhound (Total All tracks)		
Procaine		22
Trimethoprim		8
Polyethylene Glycol		8
DMSO2		3
DMSO		2
Orphenadrine		3
Tetramisole		1
Nicotinamide		2



Harness Races at the Iowa State Fairgrounds

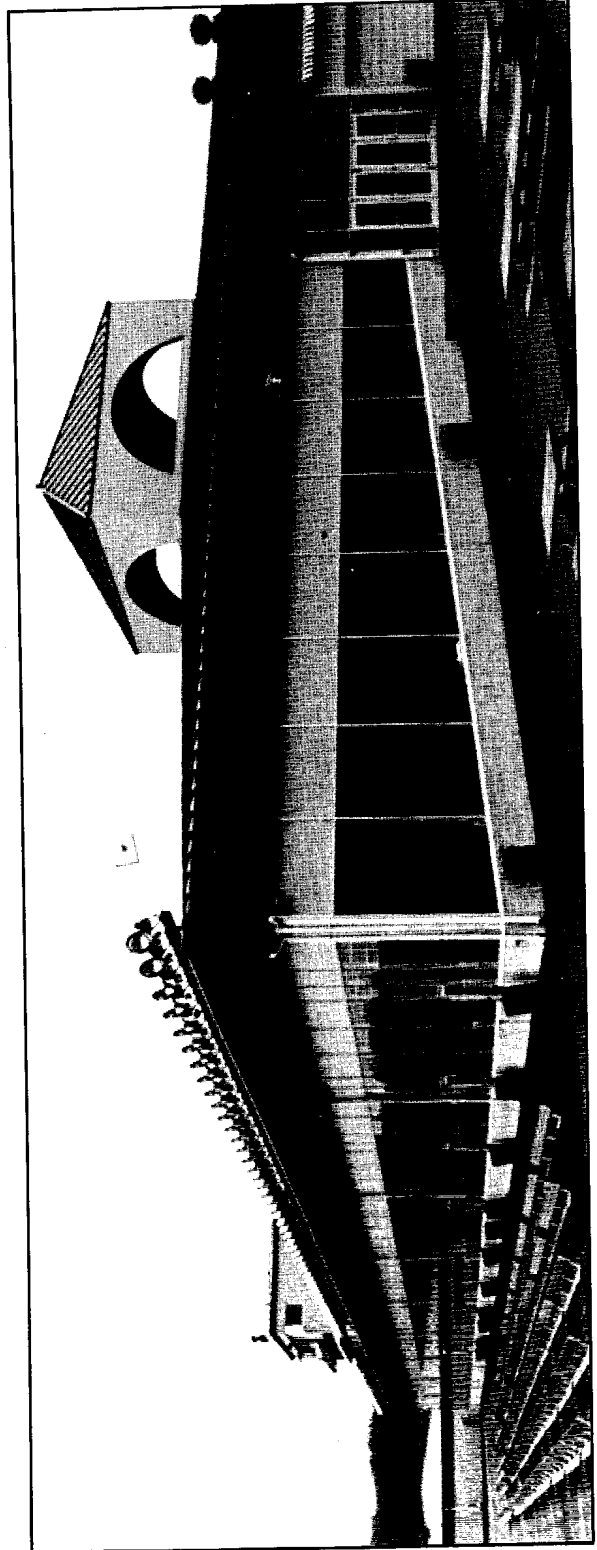
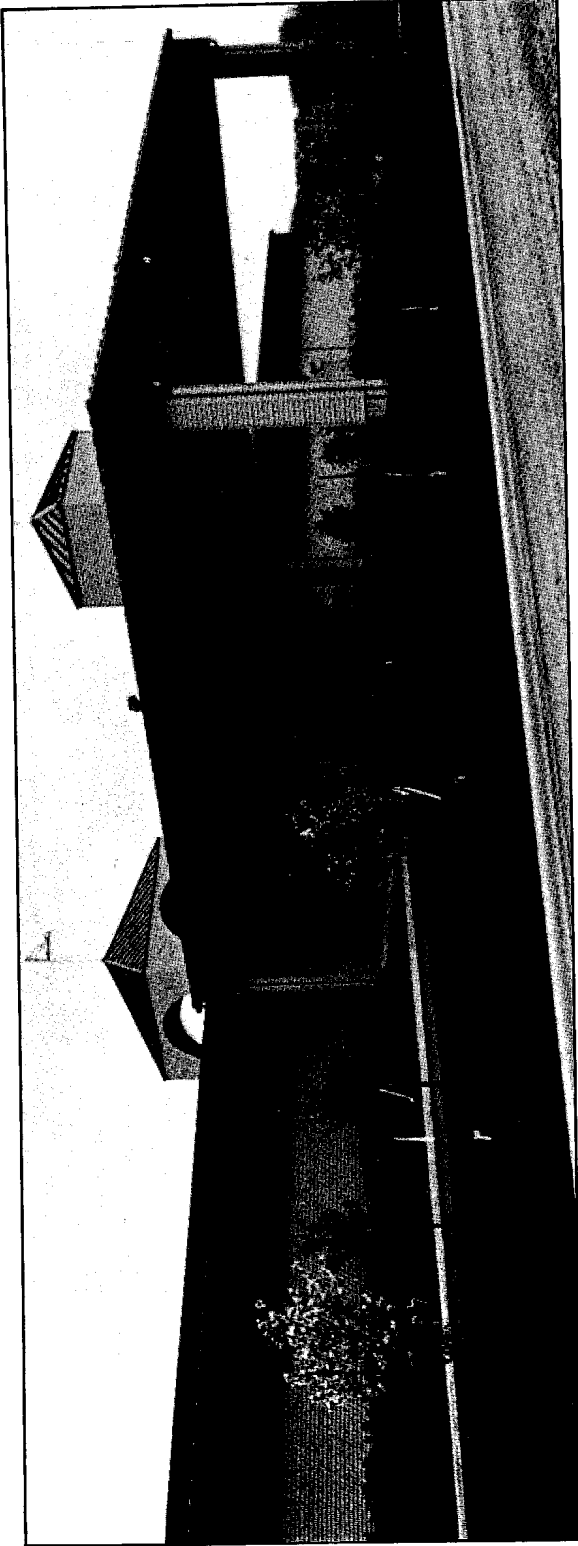
1986 COUNTY FAIRS - HARNES

Dates of Meets	Des Moines	Cedar Rapids	Humboldt	What Cheer	Denison	Spencer
	6-5/6-8	6-26/6-29	7-3/7-6	7-11/7-13	7-18/7-20	7-23/7-26
	6-12/6-15					
	6-19/6-22					
	7-30/8-3					
Number of Performances	17*	4*	4	3	3	4*
Total Mutuel Handle	1,575,043	111,237	146,551	87,876	60,157	75,807
Total Exotic	926,458	48,485	61,635	39,120	31,981	32,987
Net Track Commission	176,033.46	12,093.40	15,887.80	9,570	6,655.32	8,240.44
State Tax	78,752.15	5,561.85	7,327.55	4,393.80	3,007.85	3,790.35
City/County Tax	15,750.43	1,112.37	1,465.51	878.76	601.57	758.07
Breakage	18,134.36	1,782.38	2,158.04	541.64	805.66	1,122.14
Return to Public	1,286,372.60	90,687	119,712.10	72,491.80	49,086.60	61,896
Purse	104,650	16,250	18,750	15,700	10,650	13,400
Attendance	26,013	4,390	4,532	2,836	2,089	2,936
TOTAL MEETS.....	9	TOTAL CITY/COUNTY TAX.....	20,566.71***			
TOTAL NUMBER RACE PERFORMANCES.....	30.5	TOTAL CREDIT FOR NEW CONSTRUCTION				
		ON FACILITIES.....	102,833.55			
TOTAL MUTUEL HANDLE.....	2,056,671	TOTAL BREAKAGE.....	24,544.22			
TOTAL EXOTIC.....	1,140,666	TOTAL RETURNED TO PUBLIC.....	1,680,246.10			
TOTAL TRACK COMMISSION.....	228,480.42	TOTAL PURSE.....	179,400			
TOTAL STATE TAX.....	102,833.55**	TOTAL ATTENDANCE.....	42,796			

*Actual racing dates shown, total of 4 1/2 cancelled

**\$82,266.84 reverted to licensee for tax credit

***Entire amount reverted to licensee for tax credit

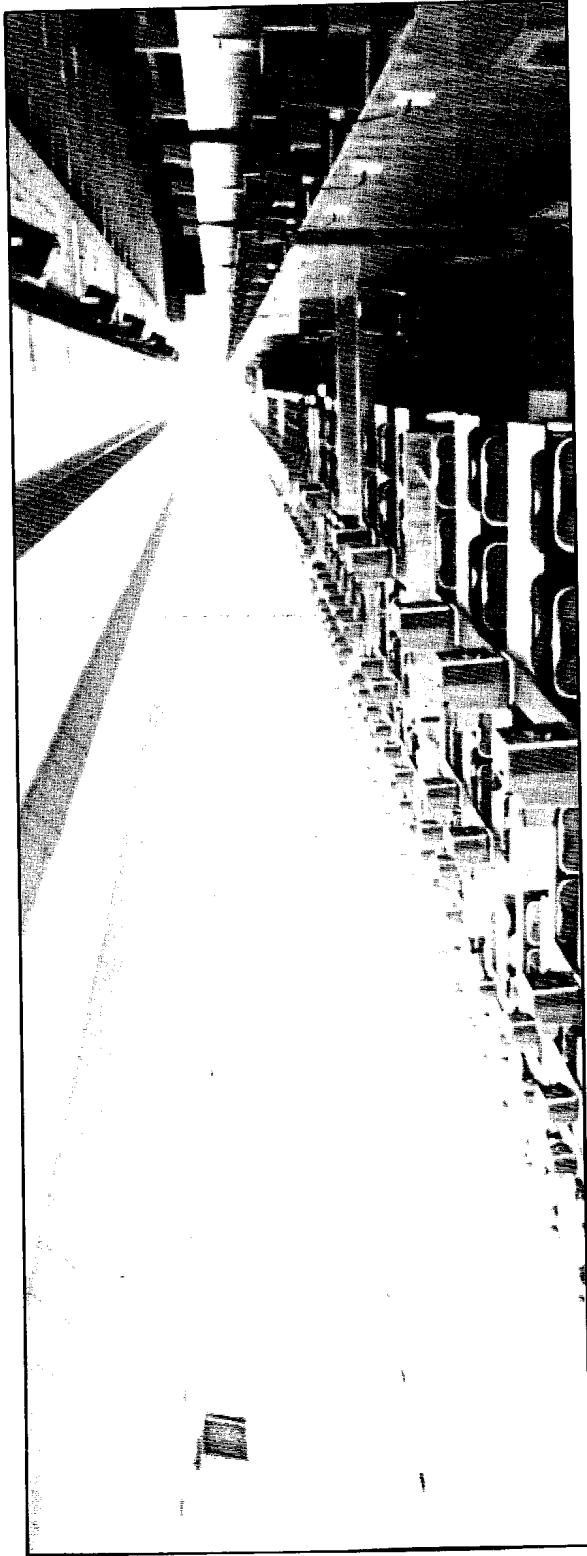
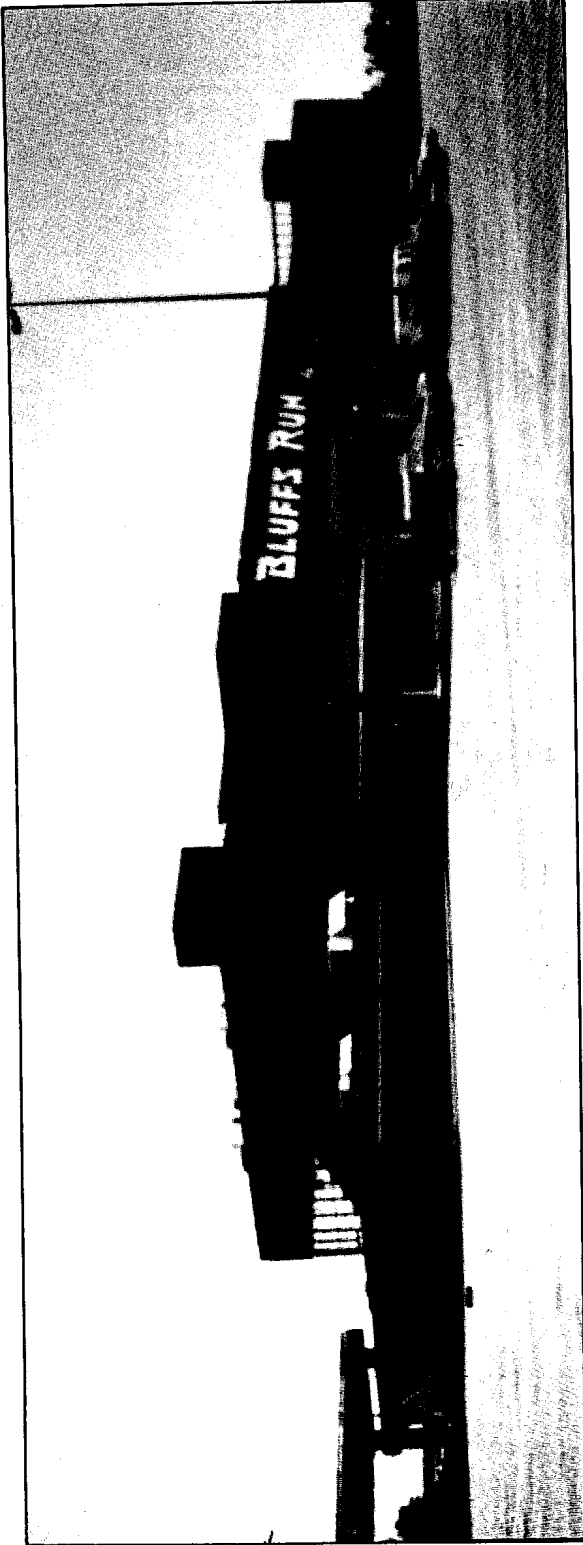


Dubuque Greyhound Park, Dubuque, Iowa

DUBUQUE GREYHOUND PARK SEASON SUMMARY

Dubuque Greyhound Park 1986 Season Summary Statement

Racing Dates	4-1 - 11-2
Number of Performances	236
Average Attendance Per Performance	2,734
Total Taxable Attendance	645,212
Daily Average Handle Per Performance	269,679
Total Mutuel Handle	63,644,286
Exotic Wagering	51,677,407
Track Commission	7,397,976.74
Breakage	237,720.60
State Tax	3,182,214.30
City/County Tax	636,442.86
Returned to Public	50,002,841.40
Purses	1,909,328.58
Fees for Stakes Races	52,675.74
Unclaimed Winnings	239,943.40

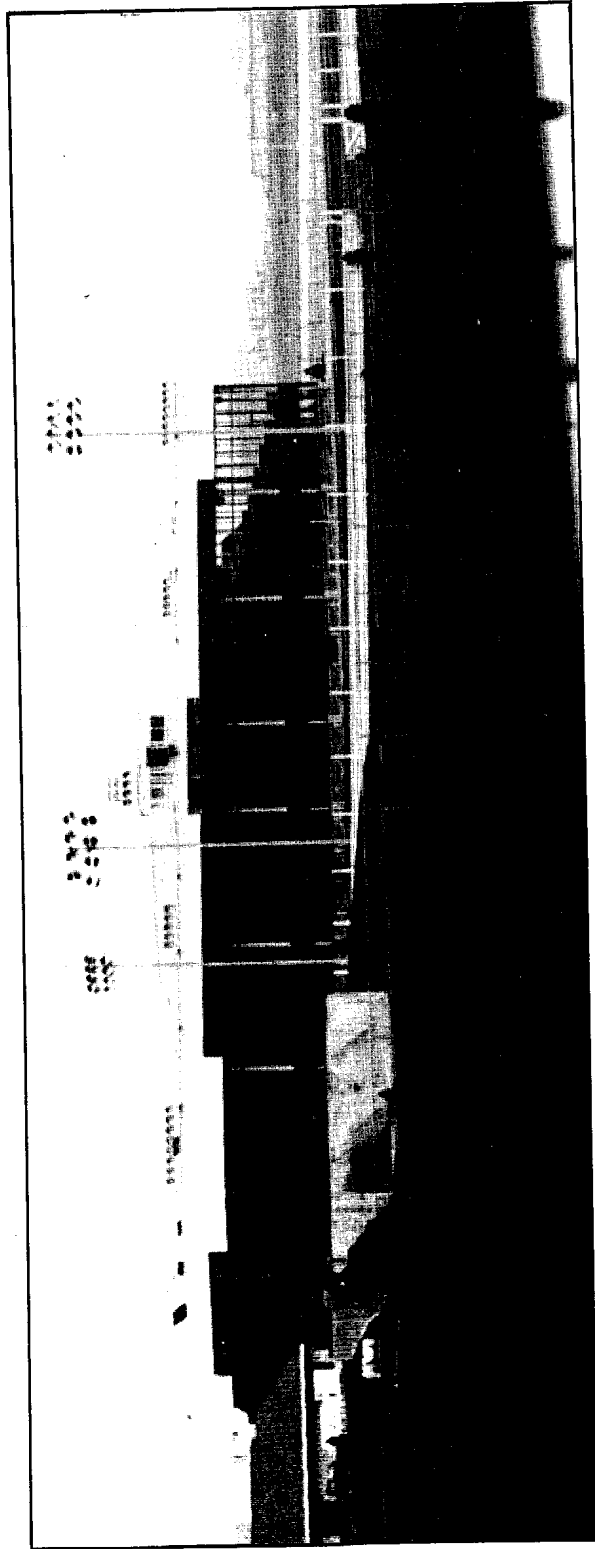
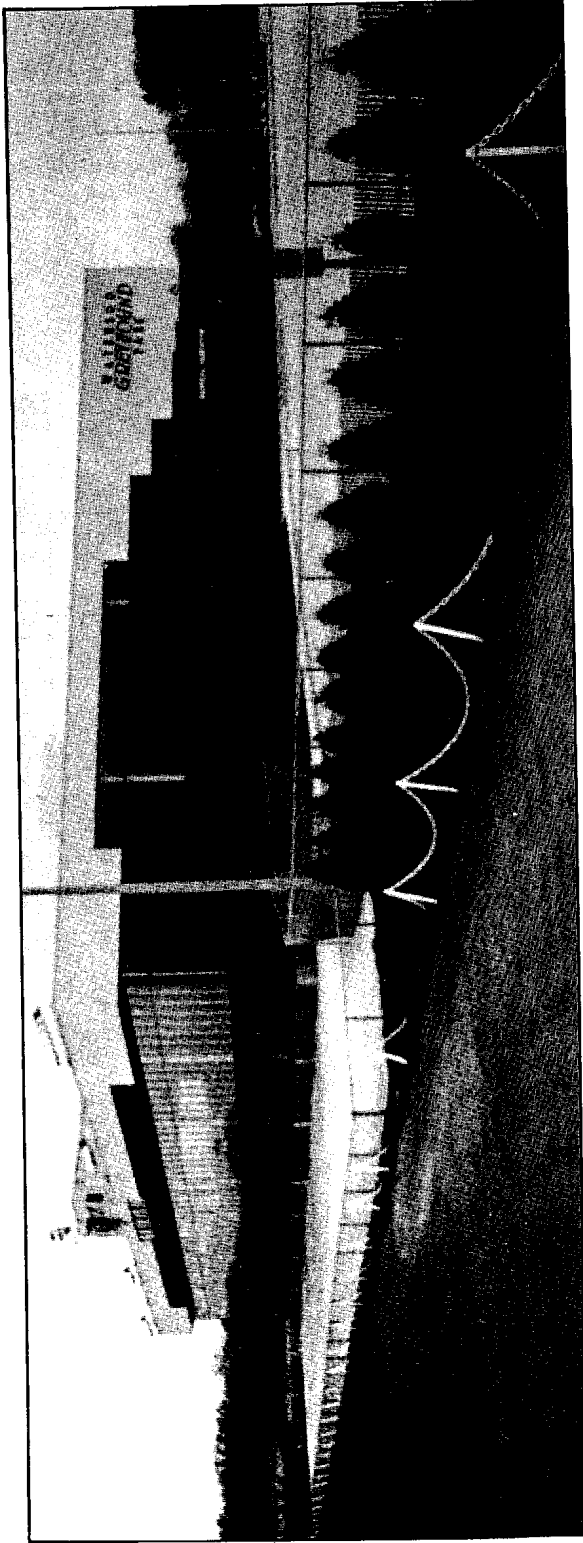


Bluffs Run, Council Bluffs, Iowa

BLUFFS RUN SEASON SUMMARY

Bluffs Run 1986 Season Summary Statement

Racing Dates	2-27 - 12-15
Number of Performances	378
Average Attendance Per Performance	2,985
Total Taxable Attendance	1,128,203
Daily Average Handle Per Performance	324,010
Total Mutuel Handle	122,475,778
Exotic Wagering	100,729,465
Track Commission	14,262,167.10
Breakage	455,565
State Tax	6,123,788.90
City/County Tax	1,224,700
Returned to Public	100,470,148.10
Purses	3,495,460
Fees for Stakes Races	112,191.24
Unclaimed Winnings	432,748.30



Waterloo Greyhound Park, Waterloo, Iowa

WATERLOO GREYHOUND PARK SEASON SUMMARY

Waterloo Greyhound Park 1986 Season Summary Statement

(Totals through December 31, 1986 - Season Ends 4-15-87)

Racing Dates	10-15 - 12-31
Number of Performances	89
Average Attendance Per Performance	1,318
Total Taxable Attendance	117,343
Daily Average Handle Per Performance	107,185.74
Total Mutuel Handle	9,539,531
Exotic Wagering	7,639,231
Track Commission	1,106,737.62
Breakage	41,699.75
State Tax	476,976.55
City/County Tax	95,395.31
Returned to Public	7,790,137.70
Purses	286,185.93

Fees for Stakes Races - Total available at the end of the season

Unclaimed Winnings - Total available 60 days after the end of the season

RECEIPTS AND DISBURSEMENTS

State pari-mutuel tax	\$ 9,803,546
Uncashed Pari-Mutuel tickets to state	\$ 682,609
TOTAL REVENUE TO STATE	\$10,486,155
TOTAL REVENUE TO LOCAL GOVERNMENT	\$ 1,956,538

Breeders Program Fund from Breakage

Greyhound	
Breeders award payments	\$ 40,387
Owners purse supplements distributed	\$ 331,129
Iowa Stakes	\$ 164,867
Carry-over Fund	\$ 247,376

Standardbred

Breeders award payments	\$ 2,006
Owners purse supplements distributed	\$ 22,790
TOTAL REVENUE TO BREEDER'S FUND	\$ 808,555

Racing Commission Operating Fund

Occupational License Fees	\$ 32,035
Track Daily License Fees	\$ 101,300
Admission Tax	\$ 947,346
Fines	\$ 6,590
Statutory Reimbursements	\$ 239,765
TOTAL REVENUE TO COMMISSION	\$ 1,327,036
TOTAL EXPENDITURES BY COMMISSION	\$ 1,019,991
Carryover for Future Expenses and Industry Research	\$ 307,045

STATEMENT OF EXPENDITURES

January 1 to December 31, 1986

Payroll	\$ 327,335
Professional Services	
Veterinarian	\$ 129,386
Laboratory	\$ 230,187
Criminal History Checks	\$ 34,674
Travel	\$ 55,209
TOTAL SERVICE EXPENDITURES	\$ 776,791
Office Supplies	\$ 33,361
Printing	\$ 11,546
Communications	\$ 9,414
Rentals	\$ 2,631
Outside Services (General)	\$ 10,141
Equipment Repairs	\$ 2,465
Data Processing	\$ 2,079
Equipment	\$ 1,605
Office Furniture	\$ 20,873
Public Relations	\$ 13,390
Capital Improvements	\$ 15,695
TOTAL OFFICE EXPENSES	\$ 123,200
RESEARCH FUNDS	
Iowa State University College of Veterinary Medicine	\$ 100,000
Killingsworth-McCladrey Feasibility Update	\$ 20,000
TOTAL RESEARCH FUNDS	\$ 120,000
TOTAL EXPENDITURES	\$ 1,019,991

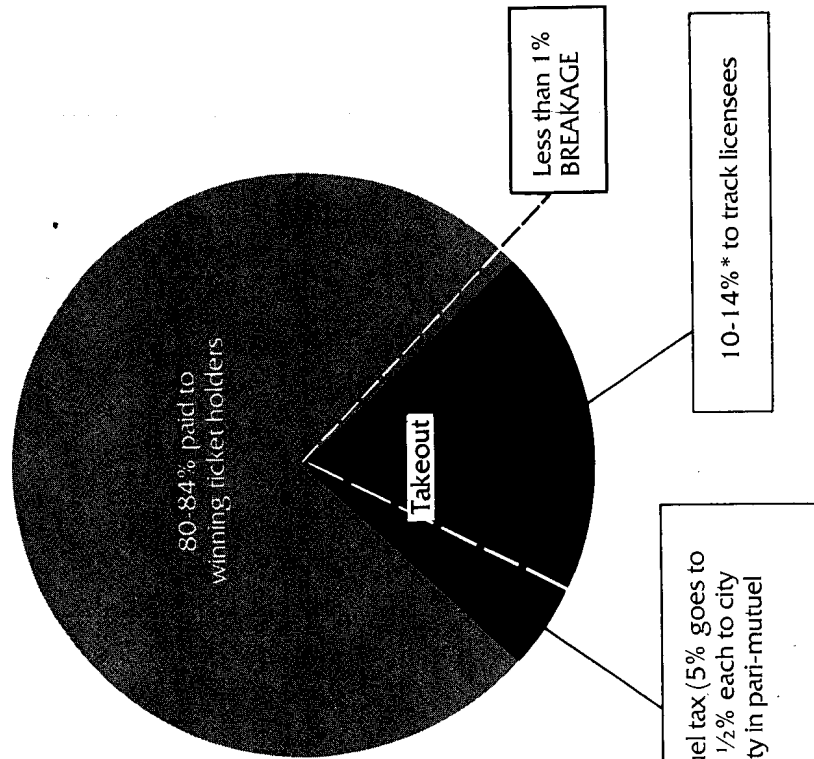
STATEMENT OF OCCUPATIONAL GREYHOUND LICENSE FEES

	Amount of License Fees	Total
Concession	743 @	5.00 3715.00
Mutuels	486 @	5.00 2430.00
Security	104 @	5.00 520.00
Parking/Admissions	109 @	5.00 545.00
Maintenance	138 @	5.00 690.00
Totalizator	21 @	5.00 105.00
Kennel Helper	151 @	5.00 755.00
Lead Out	159 @	5.00 795.00
Miscellaneous	9 @	5.00 45.00
Administration	68 @	5.00 340.00
Duplicate Licenses	94 @	5.00 470.00
Announcer	8 @	10.00 80.00
Veterinarian	2 @	10.00 20.00
Owners	842 @	10.00 8420.00
Officials	37 @	10.00 370.00
Trainers	63 @	10.00 630.00
Asst. Trainers	40 @	10.00 400.00
Board Members	35 @	10.00 350.00
Asst. Racing Secretary	2 @	10.00 20.00
Chart Writer	5 @	10.00 50.00
Track Superintendent	2 @	10.00 20.00
Partnerships	19 @	10.00 190.00
Miscellaneous	4 @	10.00 40.00
Trainer/Owner	12 @	20.00 240.00
Mutuel Manager	4 @	20.00 80.00
Asst. Manager	3 @	20.00 60.00
Racing Secretary	4 @	20.00 80.00
Concession Operator	16 @	20.00 320.00
Manager	3 @	20.00 60.00
Kennel Owner	38 @	20.00 760.00
Corporations	24 @	20.00 480.00
Ltd. Partnerships	1 @	20.00 20.00
Miscellaneous	1 @	20.00 20.00
TOTAL LICENSED	3247	23120.00

STATEMENT OF OCCUPATIONAL STANDARD BREED LICENSE FEES

	Amount of License Fees	Total
Concession	139 @	695.00
Grooms	132 @	660.00
Mutuels	243 @	1215.00
Security	85 @	425.00
Administration	53 @	265.00
Maintenance	83 @	415.00
Miscellaneous	1 @	5.00
First Aid	3 @	15.00
Board Members	23 @	115.00
Sound/Visual Techs	7 @	35.00
Totalizer	2 @	10.00
Announcer	1 @	10.00
Veterinarian	3 @	30.00
Owners	99 @	990.00
Authorized Agent	3 @	30.00
Officials	17 @	170.00
Driver/Jockey	20 @	200.00
Trainers	4 @	40.00
Outrider	11 @	110.00
Partnerships	42 @	420.00
Concession Operator	13 @	260.00
Owner/Trainer/Driver	133 @	2640.00
Mutuel Manager	1 @	20.00
Racing Secretary	1 @	20.00
Manager	4 @	80.00
Asst. Manager	2 @	40.00
TOTAL LICENSED	1125	8915.00

IOWA'S WAGERING DOLLAR



*Actual percentage depends on type of wager. The takeout is 16% on win, place and show wagers. The Racing Commission may authorize the licensee to take out 16-20% on other wagers. Six percent is paid out in pari-mutuel taxes, as shown. The remaining 10-14% goes to the track licensee for purses, operating expenses, debt retirement and distribution to local charities, community betterment projects, scholarships, etc.

The Breakage (the odd cents by which the amount payable on each dollar wagered in a pari-mutuel pool exceeds a multiple of ten cents) is distributed to the breeders of low-foaled horses and Iowa whelped dogs.

COMMISSION MEMBERSHIP

Membership on the Iowa Racing Commission remained unchanged during the period. The original five members of the Commission were confirmed by the Senate in 1984.

IOWA RACING COMMISSION

NAME	RESIDENCE	TERM EXPIRES
Lawrence F. Scalise Chair	Des Moines	April 30, 1989
L.C. "Bud" Pike	Grundy Center	April 30, 1988
Lavonne Mydland	Rock Rapids	April 30, 1987
Sally Prickett, DVM	Cumming	April 30, 1988
Steve Sovern	Marion	April 30, 1987