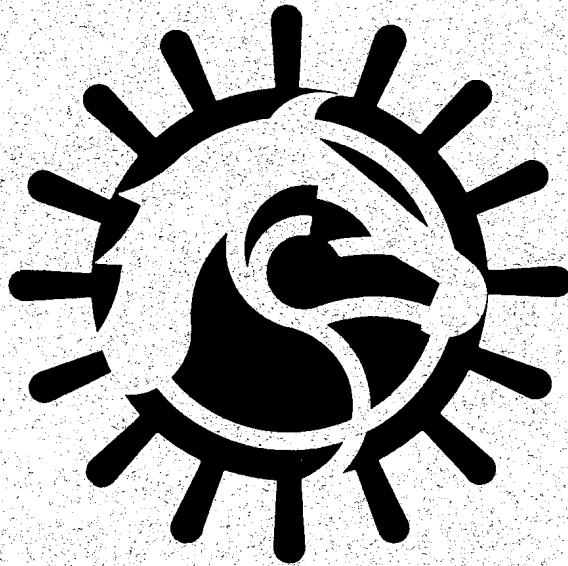

1990
ANNUAL REPORT OF THE



IOWA RACING AND GAMING COMMISSION

INTRODUCTION

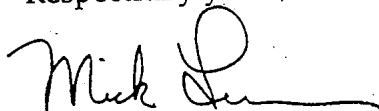
IOWA RACING AND GAMING COMMISSION
Lucas State Office Building
Des Moines, Iowa 50319

The Honorable Terry E. Branstad
Governor of the State of Iowa
State House
Des Moines, Iowa 50319

Dear Governor Branstad:

In compliance with Chapter 99D, Iowa Code, the Iowa State Racing and Gaming Commission submits herewith its Seventh Annual Report, covering the period of January 1, 1990, through December 31, 1990.

Respectfully yours,

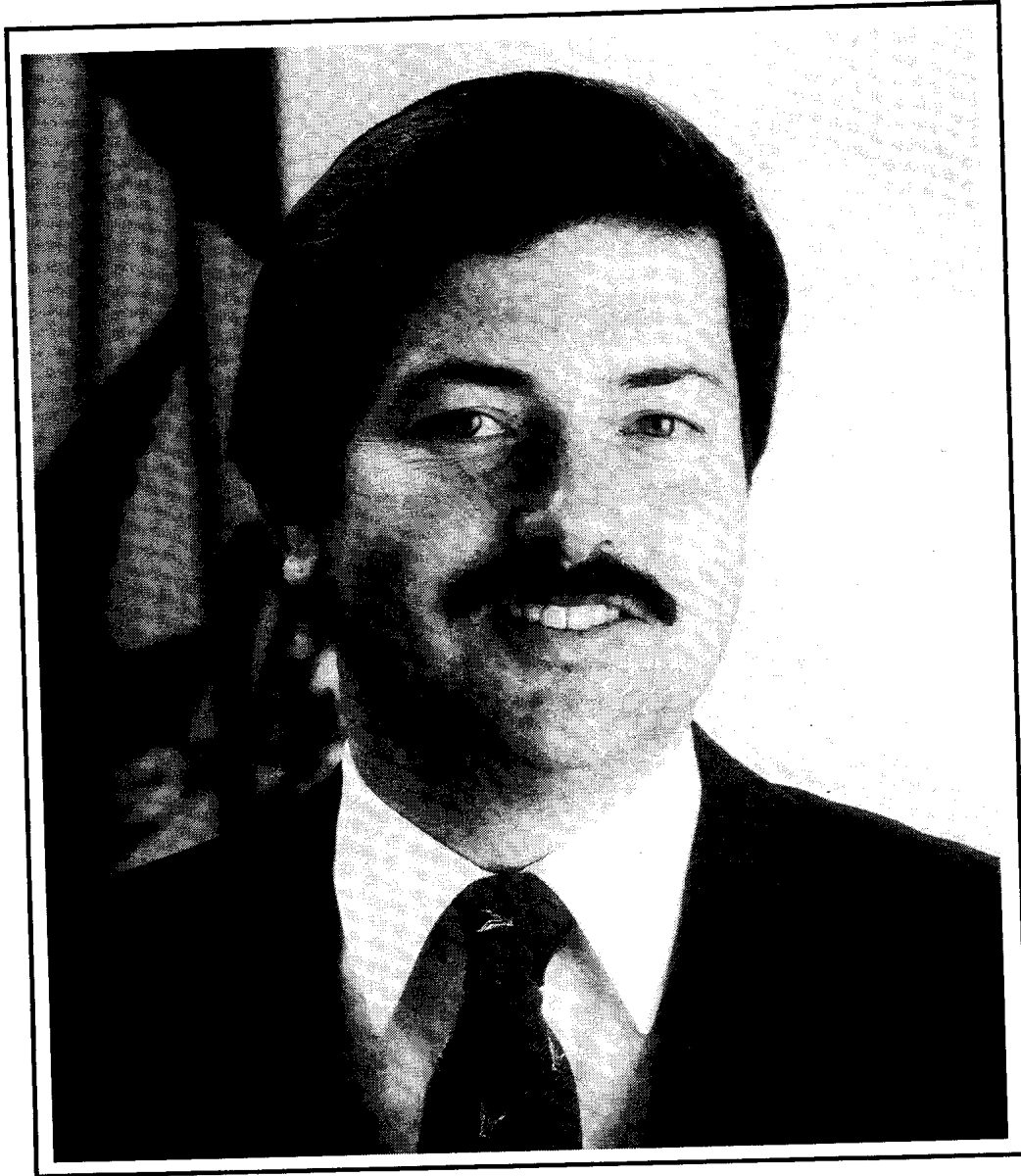


MICK LURA
Administrator

IOWA RACING COMMISSION

L. C. "Bud" Pike, Chairman
Rita Sealock, Member
Richard Canella, Member
Mick R. Lura, Administrator

Leo Monaghan, Vice-Chairman
Lorraine May, Member



The Honorable Terry E. Branstad,
Governor of Iowa

LETTER TO THE GOVERNOR

December 31, 1990

The Honorable Terry E. Branstad
Governor of Iowa
Capitol
L O C A L

Dear Governor Branstad:

The year 1990 brought in a new decade and along with it, new and exciting innovations for the Iowa Racing & Gaming Commission. New management was appointed at two of Iowa's race tracks — Bluffs Run and Prairie Meadows. The tracks continued to struggle throughout the year, but did manage to suffer less of a loss than the previous year.

Simulcasting was introduced at three of the tracks — Bluffs Run, Prairie Meadows, and Dubuque Greyhound Park. It improved the financial picture and brought additional entertainment to the patrons.

Riverboat licenses were granted to six entities to begin operation in 1991. With the issuance of the licenses came the excitement of casino gambling into our State, as well as the challenges of regulation and control. The Department of Public Safety's Division of Criminal Investigation and the riverboat operators have worked cooperatively with the Commission and staff for many months in meeting all regulatory aspects as set by the Legislature.

Indian Gaming remains a concern, but with continued effort and cooperation, Iowa's pari-mutuel racing and riverboat gaming industries are looking toward new and brighter horizons.

As in the past, we appreciate your continued support and are looking ahead to the many challenges and opportunities we'll face in the coming months.

Respectfully submitted,



L. C. Pike
Chairman

TABLE OF CONTENTS

LETTER TO GOVERNOR	iii
NEW LEGISLATION	1
COMMISSION MEMBERS	2
COMMISSION STAFF	3
COMMISSION MEETINGS	4
SEASON SUMMARY FOR ALL TRACKS/ALL BREEDS	6
SEASON SUMMARY FOR DUBUQUE GREYHOUND PARK	8
SEASON SUMMARY FOR BLUFFS RUN	10
SEASON SUMMARY FOR WATERLOO GREYHOUND PARK	12
SEASON SUMMARY FOR PRAIRIE MEADOWS	14
LABORATORY TESTING	15
IOWA BREEDER'S FUND	16
FINANCIAL POSITION FOR PARI-MUTUEL	18
STATEMENT OF EXPENDITURES FOR PARI-MUTUEL	19
STATEMENT OF OCCUPATIONAL GREYHOUND LICENSE FEES	20
STATEMENT OF OCCUPATIONAL HORSE LICENSE FEES	21
IOWA'S WAGERING DOLLAR	22
FINANCIAL POSITION FOR RIVERBOAT GAMBLING	24

NEW LEGISLATION

During the 74th General Assembly, Chapter 99F, establishing Iowa's Riverboat Gambling legislation, promulgated by implementing the following:

Establishment of the application process for excursion gambling boats within the State, including application criteria and condition, casino operation, distribution of receipts, maximum wagering, and minimum payouts.

Criteria was set which the Commission would consider when determining whether to issue a license to conduct casino gambling within Iowa's jurisdiction bodies of water.

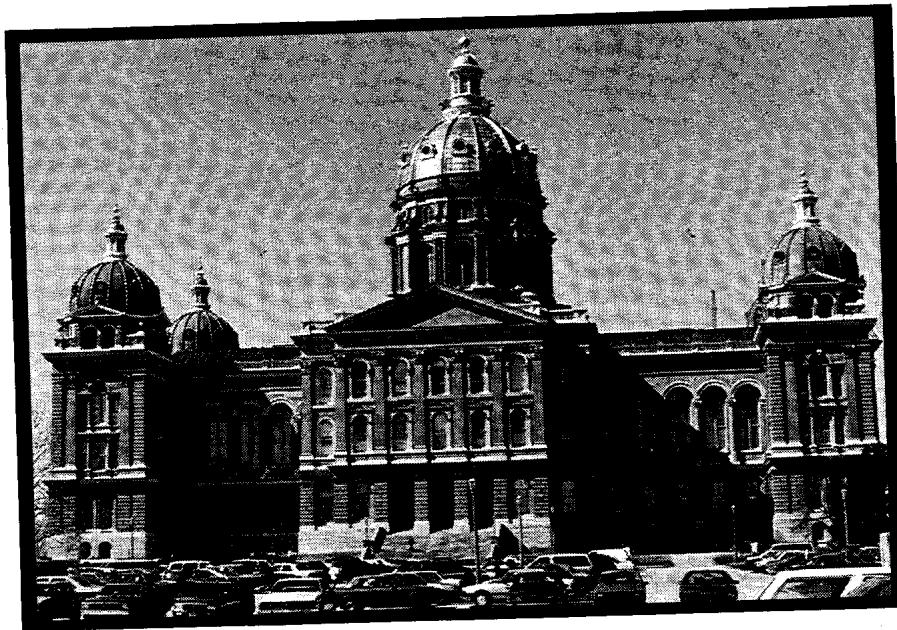
Creation of licensing requirements and standards for manufacturers, distributors, vendors and employees of the new riverboat industry.

Accounting and Cash Control procedures to be used by each licensee of an excursion gambling boat were established to insure accurate and complete reporting.

Creation of Riverboat operation and licensing standards was the next step to be completed. Instructions for qualified applicants regarding gambling games, structural layout of the riverboat, disciplinary actions for violation of rules, taxes and admission fees were addressed.

Rules of the Games completed the legislative year for the Commission. The policies for gaming conducted on the riverboats were established.

Changes were also made to 99D, pari-mutuel racing, regarding simulcasting. Ten racing events are permitted to be simulcasted at racing association premises each year. All events must be pre-approved by the Racing and Gaming Commission, including both inter-state and intra-state. All simulcasts must be transmitted live and must occur at a time during which a racing meet is scheduled at the host track. Wagering on simulcasts must be made in accordance with Iowa's rules on pari-mutuel wagering.



State Capitol, where legislation becomes law

IOWA RACING AND GAMING COMMISSION MEMBERS



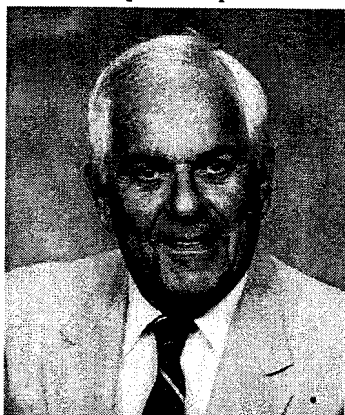
LEO K. MONAGHAN, Vice Chairman
Manchester
Term Expires: April 30, 1993



L.C. "BUD" PIKE, Chairman
Grundy Center
Term Expires: April 30, 1993



RITA SEALOCK
Council Bluffs
Term Expires: April 30, 1993



RICHARD CANELLA
Fort Madison
Term Expires: April 30, 1992



LORRAINE MAY
Des Moines
Term Expires: April 30, 1993

COMMISSION EXECUTIVE STAFF



MICK LURA
Administrator



LORENZO
CREIGHTON
Deputy
Administrator



LINDA
VANDERLOO
Director
Adm./Licensing



CHUCK PATTON

Director
Riverboat
Gambling

COMMISSION STAFF

Des Moines

Mick Lura
Lorenzo Creighton
Linda Vanderloo
Chuck Patton
Jean Cook
Kathleen Berglund
Karyl Jones
Jeff Taylor
Connie Eichhorn
Kim Jensen

Administrator
Deputy Administrator
Administration/Licensing Director
Riverboat Gambling Director
Licensing Steward
Administrative Assistant
Administrative Assistant
Programmer/Analyst
Secretary
Pari-Mutuel Clerk

Bluffs Run

Richard Woodsmall
Virginia Fuller
Lori Schultz
Lynne Rogers
Chris Moats
Prickett Veterinary Clinic

Steward
Steward
Pari-Mutuel Clerk
Pari-Mutuel Clerk
Pari-Mutuel Clerk
Contract Veterinarian

Dubuque Greyhound Park

Terrance Hirsch
Rhonda Dunbar
Cathy Dillon
Kathy Howard
Denise Kafar
David Pence

Steward
Steward
Pari-Mutuel Clerk
Pari-Mutuel Clerk
Pari-Mutuel Clerk
Contract Veterinarian

Waterloo Greyhound Park

James Gibson
Lisa Reiker-Hall
Ramona Moody
Shelly Sturch
Deb Aalfs
Brookside Vet Clinic

Steward
Steward
Pari-Mutuel Clerk
Pari-Mutuel Clerk
Pari-Mutuel Clerk
Contract Veterinarian

Prairie Meadows

Lou Baranello
Terry Allen
Tom Rockey
Shirley Stokes
Karla Wilson
Shirley McClelland
Dr. John Sweeney
Dr. Robert Stenbom

Steward
Steward
Steward
Pari-Mutuel Clerk
Pari-Mutuel Clerk
Pari-Mutuel Clerk
Veterinarian
Veterinarian

COMMISSION MEETINGS

During 1990, the Iowa Racing and Gaming Commission met 13 times. In addition, three telephonic meetings were held. Minutes of each meeting are kept on file in the Commission office, and are available to the public upon request. Highlights of the meetings follow:

January 18, 1990 — A report was given by Don Gromer, South Dakota. Racing dates, contracts, officials, department heads, performance bond, minimum purse, security plan and multiple wagering format were approved for Prairie Meadows (PM). Approved a 20% takeout at Waterloo Greyhound Park (WGP). Executive Session was held followed by a riverboat work session.

February 13-15, 1990 — The Racing and Gaming Commission met in Cedar Rapids, Iowa. Approved Iowa-bred purse supplement program and racing officials for Prairie Meadows. Adopted amendments to the pari-mutuel rules. Presentations were given by Dubuque Casino Belle, Connelly Group, Steamboat Southeast, Steamboat Development Corporation, and Missouri River Associates. Executive Session was held followed by a riverboat work session.

March 1, 1990 — A telephonic meeting was held for the purpose of Executive Session to discuss backgrounds.

March 7-8, 1989 — An Executive Session was held. Approved contracts for Prairie Meadows; Iowa-bred purse supplement program, racing officials, performance bond, minimum purse, multiple wagering format and grading system were approved for Dubuque Greyhound Park (DGP). Pic-nine rules were Emergency adopted. Approved contracts and pic-nine wagering at Bluffs Run (BR). Granted riverboat licenses for three years to Dubuque Racing Association (DRA)/Dubuque Casino Belle, Southeast Iowa Regional Riverboat Commission (SEIRRC)/Steamboat Southeast, Riverbend Regional Authority (RRA)/Steamboat Development Corporation, Missouri River Historical Development, Inc. (MRHD)/Missouri River Associates, and Riverboat Development Authority (RDA)/The Connelly Group. Riverboat contracts were approved.

April 19, 1990 — The Racing Commission met in Dubuque, Iowa. Update reports were given by Bruce Wentworth, Prairie Meadows; Mary Ellen Chamberlain, RDA; and Dan Kehl, Dubuque Casino Belle. Approved the Iowa Greyhound Association as custodian of the greyhound promotion fund for FY 1991. Findings of Fact and Orders were adopted on three cases concerning Steven Boyd and three cases concerning Wayne Epstein. Riverboat contracts were approved. Executive Session was held.

May 1, 1990 — A telephonic meeting was held. Commission granted Prairie Meadow's request to run up to 12 regular simulcast races a week, through July 30, 1990, subject to contractual agreements with the horsemen.

May 17, 1990 — Walter Pyper was approved as the new general manager at Bluffs Run. Pic-nine rules were adopted. Amendment to Chapter 10 was Emergency adopted. Riverboat contracts were approved. Executive Session was held. Reports were given by the Medication and Contract Committees.

June 21, 1990 — Racing dates of April 2, 1991 through November 10, 1991, were granted to Dubuque Greyhound Park; January 4 through December 31 were granted to Bluffs Run; October 10, 1991, through April 19, 1992, were granted to Waterloo Greyhound Park; and March 1 through November 18 were granted to Prairie Meadows. Approval was granted for Dubuque Greyhound Park and Bluffs Run to simulcast the Greyhound Race of Champions. Executive Session was held.

July 19, 1990 — The Iowa-bred purse supplement, grading system, racing officials, and department heads, minimum purse and multiple wagering format was approved for Prairie Meadows. Gave approval to Prairie Meadows to simulcast dog races with the stipulation there by at least four live races taking place each night. A report was given by Jay Spurrier on the pari-mutuel industry nationally. Final adopted amendments to Chapter 10. An Executive Session was held followed by a hearing on Jeff Johnston.

August 1, 1990 — A special meeting was held to address the report of matters raise in the investigation report concerning activities of Administrator Mick Lura. August 16, 1990 - The Racing and Gaming Commission met in Ames, Iowa. A report was given by Rex Darrah and Fred Schwieger, HBPA. Settlement agreement was reached with William Delaney, Dubuque Racing Association. Riverboat contracts were approved. Riverboat updates were given by Bruce Wentworth, Dubuque Casino Belle and David Joyce, Steamboat Southeast and Steamboat Development Corporation. Executive session was held. Following the meeting, a tour of the Iowa State University, College of Veterinary Medicine Racing Chemistry Laboratory was taken.

September 19, 1990 — A work session on riverboat rules was held. Hearing on the revocation of the Missouri Riverboat Historical Development, Inc./Missouri Riverboat Association license was held. Reports were given by Don Loughren and Gloria Sanders, Iowa Greyhound Association. The riverboat contracts were approved. Approved additional simulcasting at Prairie Meadow. Iowa-bred purse supplement program, grading system, racing officials, minimum purse, multiple wagering format, performance bond and contracts were approved for Waterloo Greyhound Park. Final adoption of Chapter 22.

October 1, 1990 — A telephonic meeting was held. Approval of Order revoking the license of Missouri Riverboat Historical Development, Inc./Missouri Riverboat Association.

October 18, 1990 — The Racing and Gaming Commission met in Waterloo, Iowa. Executive Session was held. Final adoption of amendments to Chapter 7. Update reports were given by Carole Baumgarten, Prairie Meadows; Bruce Wentworth, Dubuque Greyhound Park; Bob Kehl, Dubuque Casino Belle; David Joyce, Steamboat Southeast and Steamboat Development Corporation; and Mary Ellen Chamberlain, Riverboat Development Authority. Excursion and winter docking schedules were approved for the Dubuque Casino Belle, Steamboat Southeast, Connelly Group, and Steamboat Development Corporation Boat 1. Riverboat contracts were approved. Greyhound Committee report was given.

November 27, 1990 — Final adoption of Chapters 24 and 26; approved riverboat contracts. Granted a riverboat license to Missouri River Historical Development Inc./Steamboat Sioux City. The Greyhound Committee report was given. An Executive Session was held.

December 13, 1990 — Iowa-bred purse supplement, grading system, racing officials and department heads, minimum purse, multiple wagering format and performance bond were approved for Bluffs Run. Riverboat contracts were approved. A riverboat update was given by Ed Ellers, Connelly Group. Approved excursion schedule and winter docking of Steamboat Development Corporation Boat 2. Adoption of Legislative Committee's recommendation.

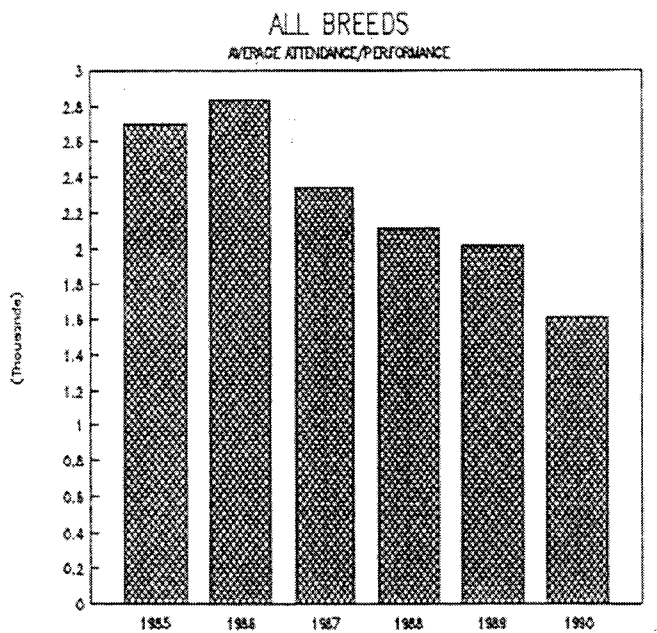
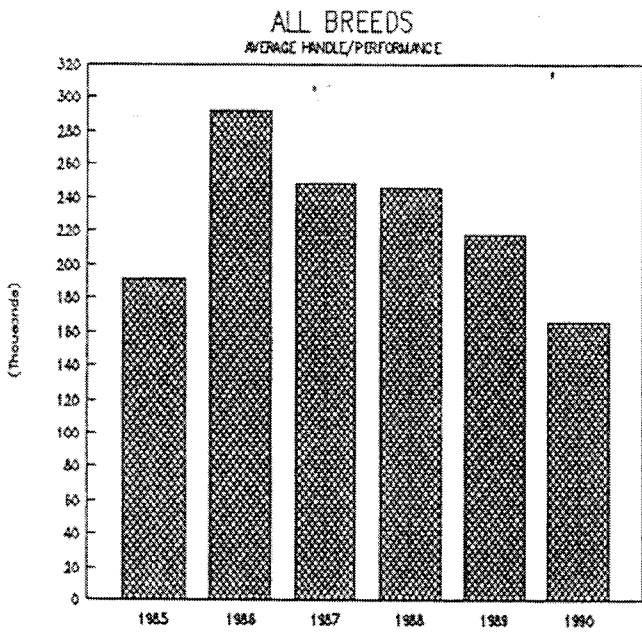
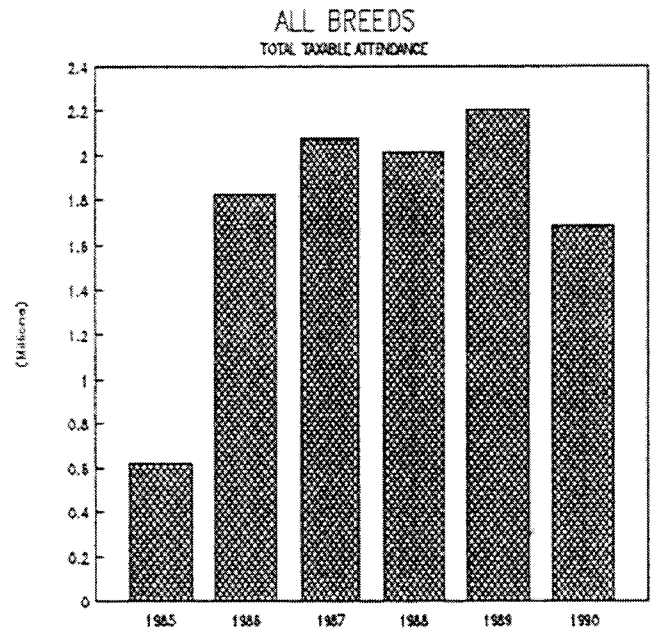
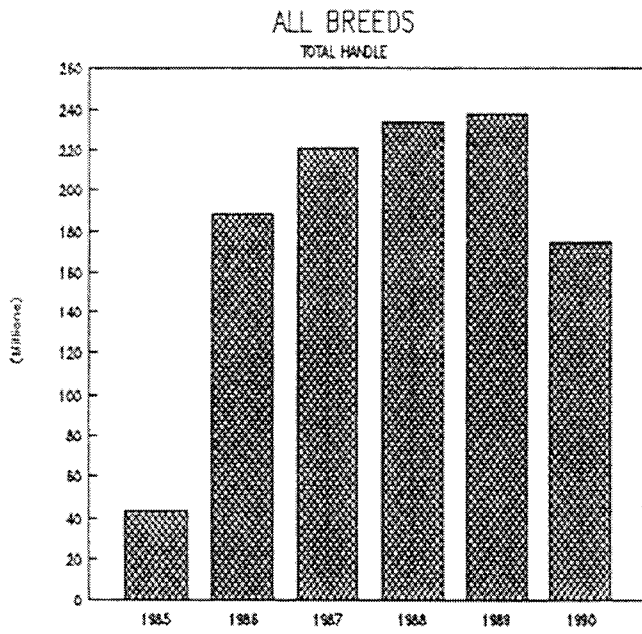
IOWA'S RACE TRACKS ALL BREEDS

THE 1989 SEASON SUMMARY IS AS FOLLOWS:

Number of Performances	1,058
Average Attendance Per Performance	1,614
Total Taxable Attendance	1,684,529
Daily Average Handle Per Performance	\$ 165,200
Total Mutuel Handle	\$174,781,997
Exotic Wagering	\$141,546,503
Track Commission	\$ 21,875,786
Breakage	\$ 769,203
State Tax	\$ 8,861,502
City/County Tax	\$ 1,747,913
Credit for New Tax Const	\$ —0-
Returned to Public	\$141,925,954
Purses	\$ 6,744,657
Unclaimed Winnings	\$ 782,810
Simulcast Handle	\$ 4,579,227

ALL TRACK — ALL BREEDS COMPARISON

	1985	1986	1987	1988	1989
Number of Performances	229	644.5	886	954	1,092
Average Attendance Per Performance	2,703	2,832	2,343	2,113	2,018
Total Taxable Attendance	619,041	1,825,211	2,075,879	2,015,601	2,203,366
Daily Average Handle Per Performance	\$191,015	\$291,973	\$248,717	\$245,007	\$217,569
Total Mutuel Handle	\$43,742,584	\$188,176,735	\$220,361,867	\$233,736,562	\$237,585,822
Breakage	\$262,048	\$717,830	802,508	\$803,372	\$1,045,577
Unclaimed Winnings	\$70,051	\$682,608	\$869,884	\$999,407	926,496



IOWA'S RACE TRACKS

DUBUQUE GREYHOUND PARK

Dubuque Greyhound Park located in Dubuque, raced 244 performances in 1990 beginning March 24 and ending November 4. The average handle was \$168,184 with an average daily attendance of 1,441 patrons wagering on the greyhounds.

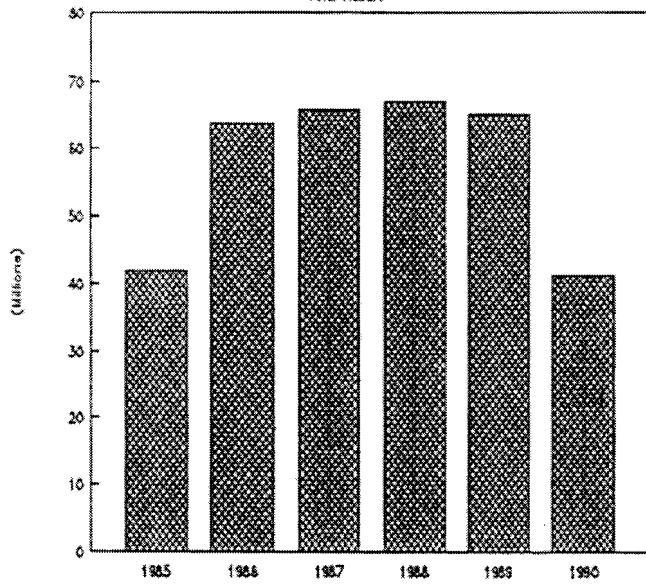
THE SEASON SUMMARY IS AS FOLLOWS:

Racing Dates	3-24 - 11-4
Number of Performances	244
Average Attendance Per Performance	1,441
Total Taxable Attendance	351,542
Daily Average Handle Per Performance	\$ 168,184
Total Mutuel Handle	\$41,036,903
Exotic Wagering	\$35,563,588
Track Commission	\$ 4,811,854
Breakage	\$ 120,261
State Tax	\$ 2,060,970
City/County Tax	\$ 412,194
Returned to Public	\$33,814,126
Purses	\$ 1,281,542
Unclaimed Winnings	\$ 221,779
Simulcast Handle	\$ 15,290

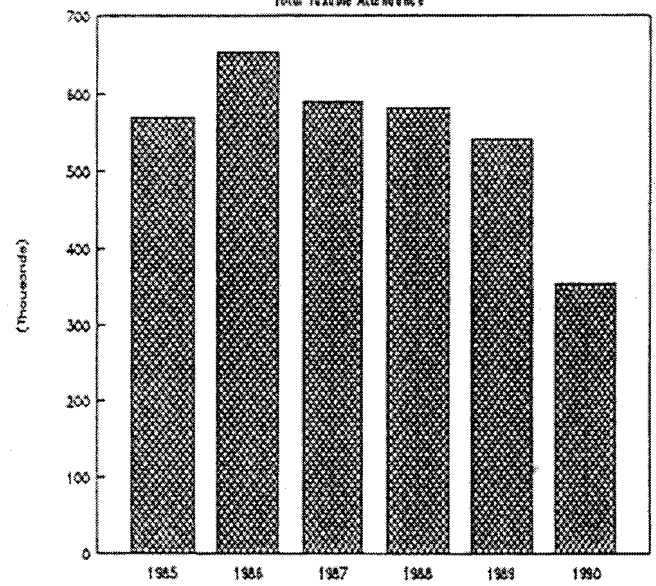
DUBUQUE GREYHOUND PARK COMPARISON

	1985	1986	1987	1988	1989
Racing Dates	6-1/11-17	4-1/11-2	4-1/11-1	4-6/11-13	3-29/11-5
Number of Performances	198	236	232	240	238
Average Attendance Per Performance	2,856	2,734	2,540	2,424	2,274
Total Taxable Attendance	569,407	654,212	589,317	581,865	541,115
Daily Average Handle Per Performance	\$218,273	\$269,279	\$283,504	278,719	\$273,805
Total Mutuel Handle	\$41,690,178	\$63,644,286	\$65,773,036	\$66,892,630	\$65,165,531
Breakage	\$237,970	\$237,721	\$228,620	\$232,631	\$205,202
Unclaimed Winnings	\$58,400	\$239,943	\$296,965	\$290,015	\$301,996

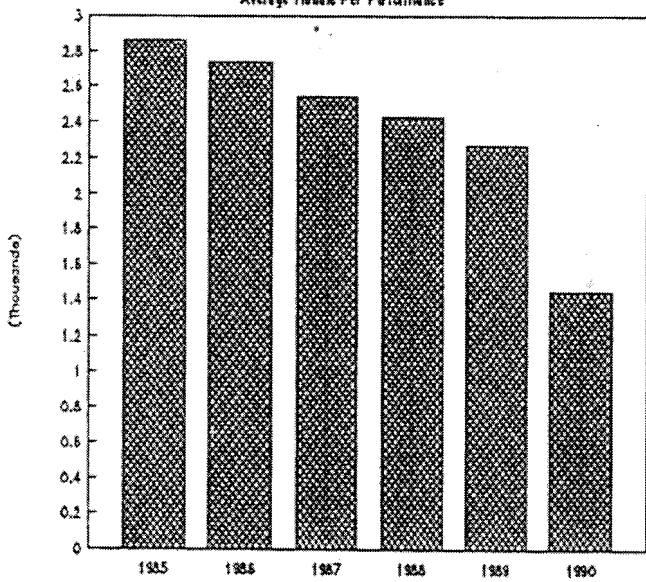
DUBUQUE GREYHOUND PARK
Total Handle



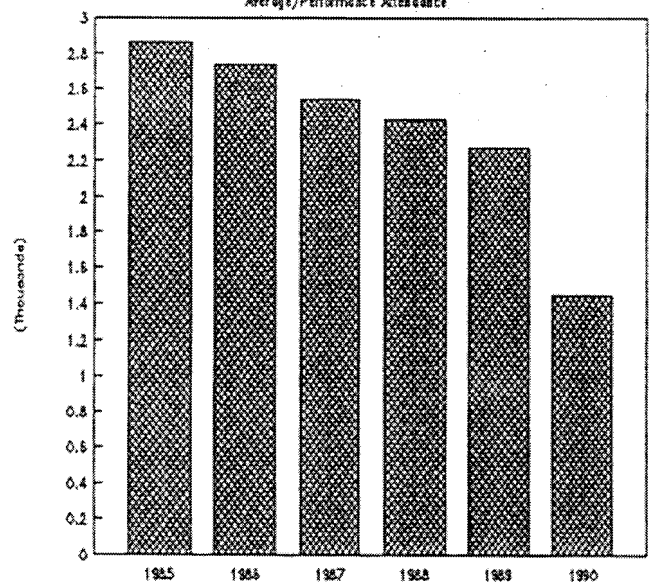
DUBUQUE GREYHOUND PARK
Total Taxable Attendance



DUBUQUE GREYHOUND PARK
Average Handle Per Performance



DUBUQUE GREYHOUND PARK
Average/Performance Attendance



IOWA'S RACE TRACKS

BLUFFS RUN

Bluffs Run located in Council Bluffs, conducted greyhound racing on an almost year round basis in 1990. Their season began January 4 and ended December 31 racing 452 performances. The average handle was \$183,617 with a daily average attendance of 1,736 patrons wagering on the greyhounds.

THE SEASON SUMMARY IS AS FOLLOWS:

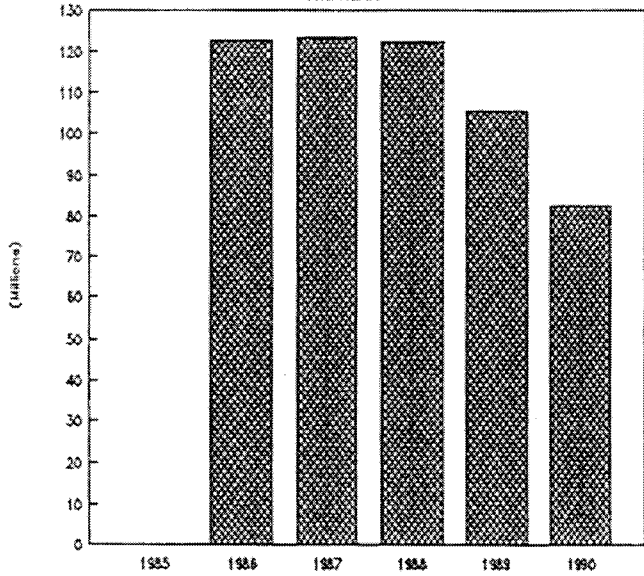
Racing Dates	1-4 - 12-31
Number of Performances	448
Average Attendance Per Performance	1,736
Total Taxable Attendance	777,537
Daily Average Handle Per Performance	\$ 183,617
Total Mutuel Handle	\$82,260,213
Exotic Wagering	\$ 67,559,721
Track Commission	\$ 10,889,599
Breakage	\$ 296,953
State Tax	\$ 4,113,011
City/County Tax	\$ 822,602
Returned to Public	\$ 66,139,801
Purses	\$ 2,490,617
Unclaimed Winnings	\$ 320,060
Simulcast Handle	\$ 4,428,674

BLUFFS RUN COMPARISON

	1985	1986	1987	1988	1989
Racing Dates	2-27/12-15	1-31/12-14	1-8/12-31	1-6/12-31	
Number of Performances	378	415	458	462	
Average Attendance Per Performance	2,985	2,747	2,417	2,100	
Total Taxable Attendance	1,128,203	1,131,725	1,107,106	970,150	
Daily Average Handle Per Performance	\$324,010	\$299,164	\$266,736	\$228,307	
Total Mutuel Handle	\$122,475,778	\$123,255,538	\$122,165,062	\$105,477,937	
Breakage	\$455,565	\$445,223	\$443,282	\$379,565	
Unclaimed Winnings	\$432,748	\$428,968	\$463,478	\$356,195	

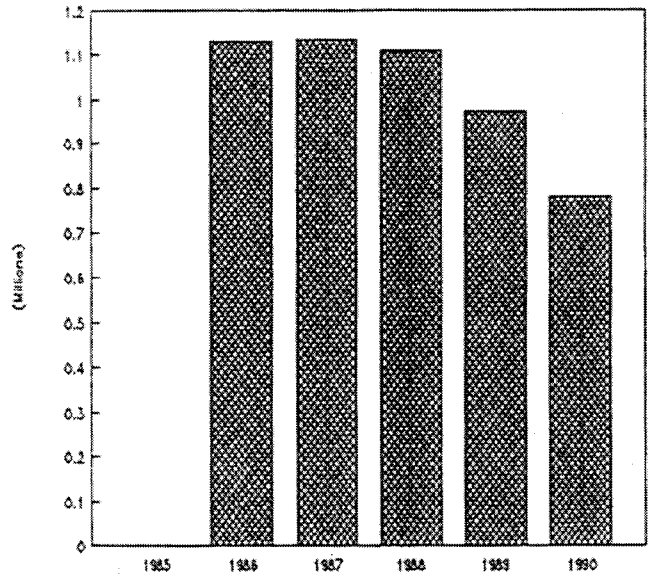
BLUFFS RUN GREYHOUND PARK

Total Handle



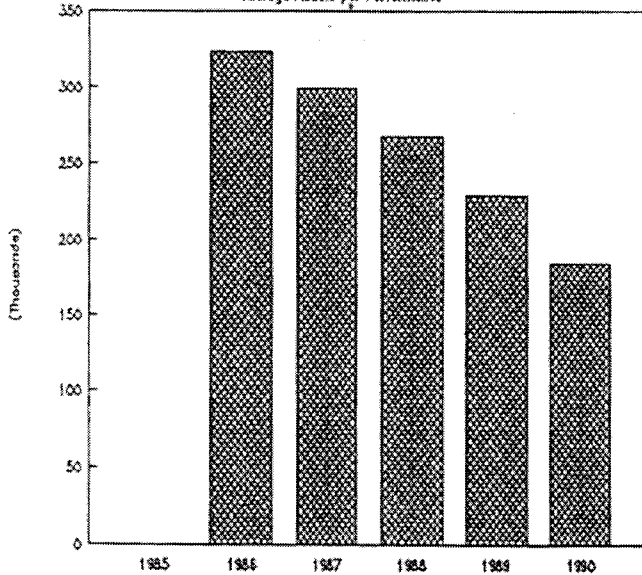
BLUFFS RUN GREYHOUND PARK

Total Taxable Attendance



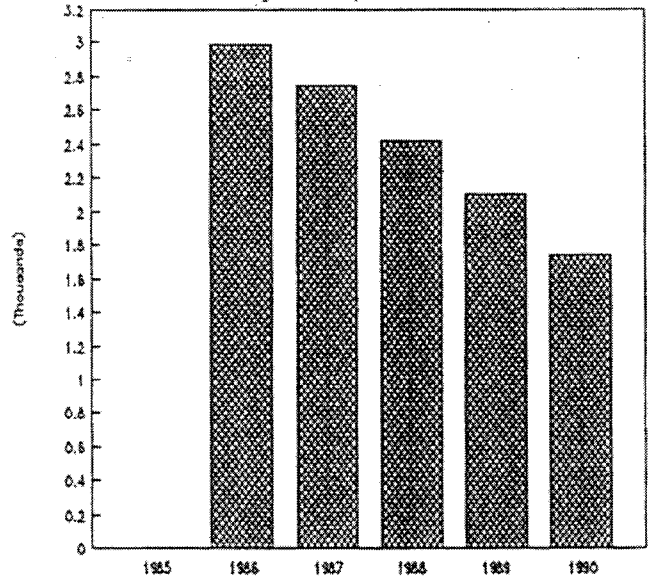
BLUFFS RUN GREYHOUND PARK

Average Handle per Performance



BLUFFS RUN GREYHOUND PARK

Average Attendance per Performance



IOWA'S RACE TRACKS

WATERLOO GREYHOUND PARK

Waterloo Greyhound Park, located in Waterloo has finished their fifth winter season. They opened October 11, 1989, and completed 226 performances with a daily average attendance of 1,086 and an average handle of \$130,749. The handle was \$29,549,384, and the attendance totaled 245,333 patrons.

The following are the totals for Waterloo Greyhound Park's 1989-90 season.

THE SEASON SUMMARY IS AS FOLLOWS:

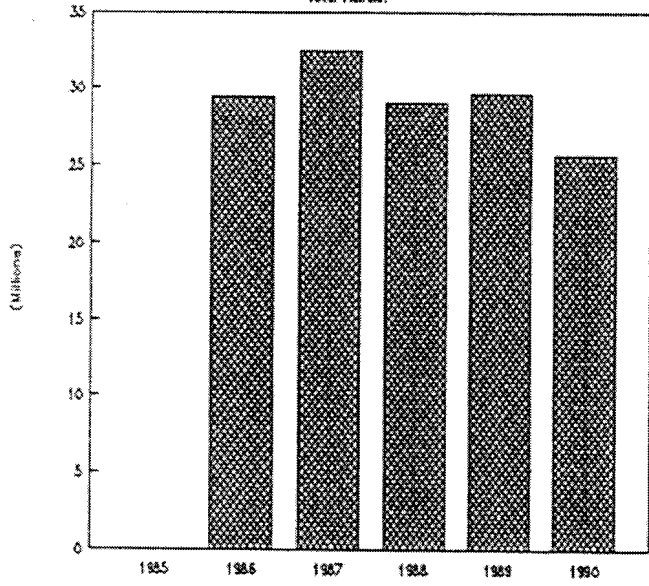
Racing Dates.....	9/28/89 - 4/8/90
Number of Performances.....	226
Average Attendance Per Performance.....	1,086
Total Taxable Attendance.....	245,333
Daily Average Handle Per Performance.....	\$ 130,749
Total Mutuel Handle.....	\$29,549,384
Exotic Wagering.....	\$26,254,627
Track Commission.....	\$ 3,701,304
Breakage.....	\$ 70,992
State Tax.....	\$ 886,482
City/County Tax.....	\$ 295,494
Returned to Public.....	\$24,004,211
Purses.....	\$ 936,444
Unclaimed Winnings.....	\$ 179,426

WATERLOO GREYHOUND PARK COMPARISON

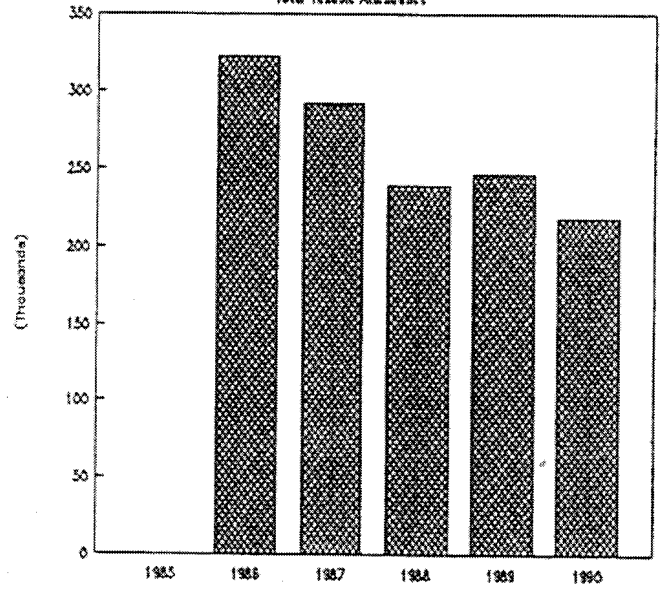
	1985	1986-1987	1987-1988	1988-1989
Racing Dates		10-15-86/04-15-87	10-16-87/04-01-88	09-06-88/03-12-89
# of Performances		213	234	222
Avg. Attendance/Perform.		1,513	1,247	1,076
Total Taxable Attendance		322,272	291,733	238,814
Daily Avg. Handle/Perform.		\$137,778	\$138,579	\$130,603
Total Mutuel Handle		\$29,346,834	\$32,427,585	\$28,993,917
Breakage		\$109,291	\$106,299	\$73,834
Unclaimed Winnings		\$134,418	\$235,944	\$147,619

END OF FILE

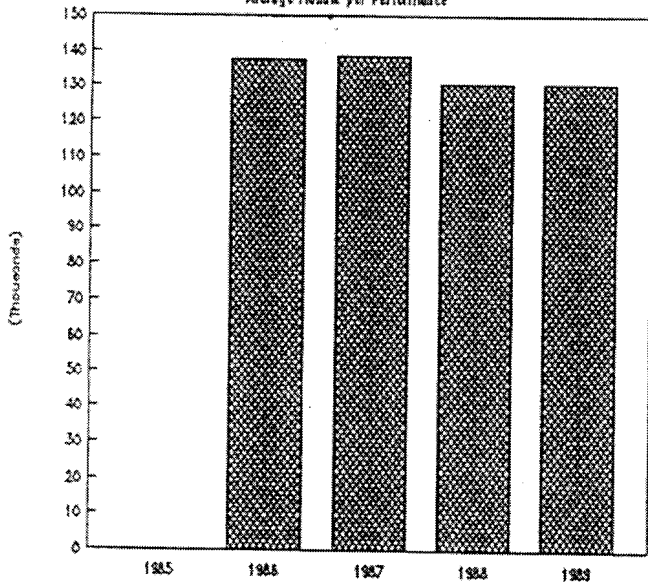
WATERLOO GREYHOUND PARK
Total Handle.



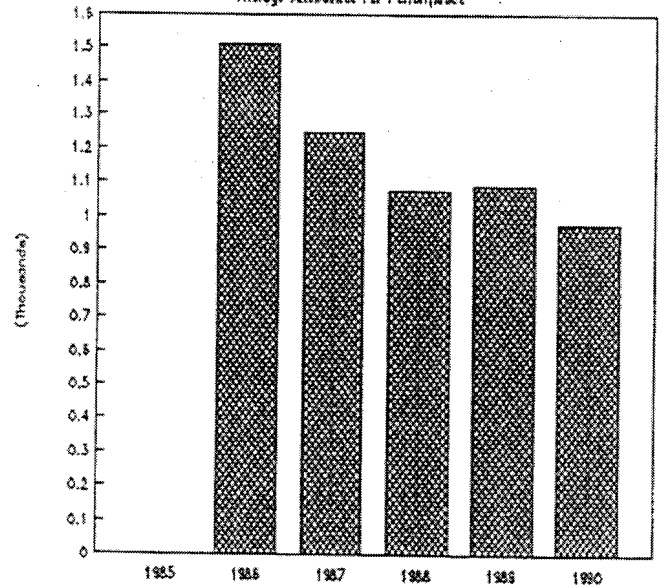
WATERLOO GREYHOUND PARK
Total Taxable Attendance



WATERLOO GREYHOUND PARK
Average Handle per Performance



WATERLOO GREYHOUND PARK
Average Attendance Per Performance



IOWA'S RACE TRACKS

PRAIRIE MEADOWS

Prairie Meadows located in Altoona, conducted its inaugural season of horse racing in 1990. Their season began March 15 and ended October 27 racing 139 performances, incorporated in three separate race meets, spring and fall being thoroughbred/quarterhorse and the summer being harness.

THE SEASON SUMMARY IS AS FOLLOWS:

	Thoroughbred/Quarterhorse	Harness
Racing Dates	3-15/7-30	8-16/10-27
Number of Performances	95	44
Attendance	275,800	62,812
Total Mutuel Handle	\$23,340,890	\$2,595,713
Total Exotic	\$13,248,251	\$1,670,393
Track Commission	\$ 2,864,019	\$ 326,387
Breakage.....	\$ 183,717	\$ 19,664
State Tax.....	\$ 1,167,045	\$ 129,786
City/County Tax.....	\$ 233,409	\$ 25,957
Return to Public	\$18,892,407	\$2,093,919
Purse	\$ 1,803,429	\$ 338,815
Simulcast Handle	\$ 2,932,957	\$2,200,985
TOTAL MEETS		2
TOTAL NUMBER OF RACE PERFORMANCES		139
AVERAGE ATTENDANCE PER PERFORMANCE		2,436
TOTAL TAXABLE ATTENDANCE		338,612
AVERAGE DAILY HANDLE PER PERFORMANCE	\$ 186,594	
TOTAL MUTUEL HANDLE	\$25,936,603	
TOTAL EXOTIC	\$14,918,644	
TOTAL TRACK COMMISSION	\$ 3,190,406	
TOTAL BREAKAGE	\$ 203,381	
TOTAL STATE TAX	1,296,831	
TOTAL CITY/COUNTY TAX	259,366	
TOTAL CREDIT FOR NEW CONSTRUCTION OF FACILITIES	\$ -0-	
TOTAL RETURNED TO PUBLIC	\$20,986,326	
TOTAL PURSE	\$ 2,142,245	
UNCLAIMED WINNINGS	\$ 111,438	
SIMULCAST HANDLE	\$ 5,133,942	

*99D.15(8)2 Legislation provides a tax credit in the amount of 6%, if the gross sum wagered (handle) is under \$90,000,000 at horse racing facilities, to be applied against their debt retirement.

LABORATORY TESTING

The Iowa Racing and Gaming Commission strives to protect the integrity of the sport of racing in Iowa. Iowa's blood/urine testing program is the backbone of the agency's policing functions. The program was conducted by Iowa State University Diagnostic Laboratory, of Ames, Iowa.

It is the duty of the Iowa Racing and Gaming Commission, and its racing chemist, through chemical analysis of blood and urine samples collected from racing animals at the tracks, to insure that foreign substances are not being administered to racing animals pursuant to Iowa Code Chapter 99D.25 of the Iowa Pari-Mutuel Wagering Act. This section prohibits the administration of any foreign substance prior to a race. The Commission will continue to justify intense regulation to guarantee the racing industry in Iowa is above reproach.

The following is a summary of chemical tests conducted by the Iowa State Veterinary Diagnostic Lab in 1990 for the Iowa Racing and Gaming Commission.

	URINE	BLOOD
Horse	2,216	4,612
Greyhound	8,188	
Bluffs Run		
Dubuque Greyhound Park	4,547	
Waterloo Greyhound Park	4,466	
	POSITIVE TESTS	
	Horse	Greyhound
Procaine		32
Trimethoprim	1	8
DMSO2	2	
Sulfamethoxazole		20
Sulfadimethoxine		27
Sulfamethazine		52
Phenylbutazone	39	1
Nicotinamide		2
Hydroxphenbutazone		2
Oxyphenbutazone	2	
Hordenine	2	
Sulfadiazine		1
Isoxsuprine	8	
Dexamethason	7	
Furosemide	2	
	64	145
TOTAL POSITIVES		

IOWA BREEDER'S FUND

IOWA SUPPLEMENTS

The Department of Agriculture maintains a data base of thoroughbred, standardbred and quarterhorses who have qualified to be Iowa-foaled horses, as well as greyhounds that have qualified as Iowa-whelped dogs according to Iowa Code Chapter 99D.22 and Administrative Rules of the Department of Agriculture.

An amount equal to 12% of the winner's share of any purse won by an Iowa-foaled horse or Iowa-whelped dog is withheld by the licensee from the breakage and paid at the end of the race meeting to the Department of Agriculture. The Department of Agriculture in turn pays the breeder of the winning Iowa-foaled horse or breeder of the Iowa-whelped dog on December 31 of each year. The amounts created from the total breakage were paid out as follows in 1990:

THOROUGHBRED/QUARTERHORSE

Breeder's Awards\$ 38,653.17
Supplements\$166,845.70

STANDARDBREDS

Breeder's Awards\$ 4,260.00
Supplements\$ 38,204.24

GREYHOUNDS

Bluffs Run

Breeder's Awards\$ 54,244.80
Supplements\$179,063.49
Iowa Stakes\$ 61,323.25
Carry-over\$ -0-
Dog Racing Promotion Fund\$ 4,905.86

Dubuque Greyhound Park

Breeder's Awards\$ 26,926.33
Supplements\$70,378.35
Iowa Stakes\$ 24,102.18
Carry-over\$ -0-
Dog Racing Promotion Fund.....\$ 1,928.17

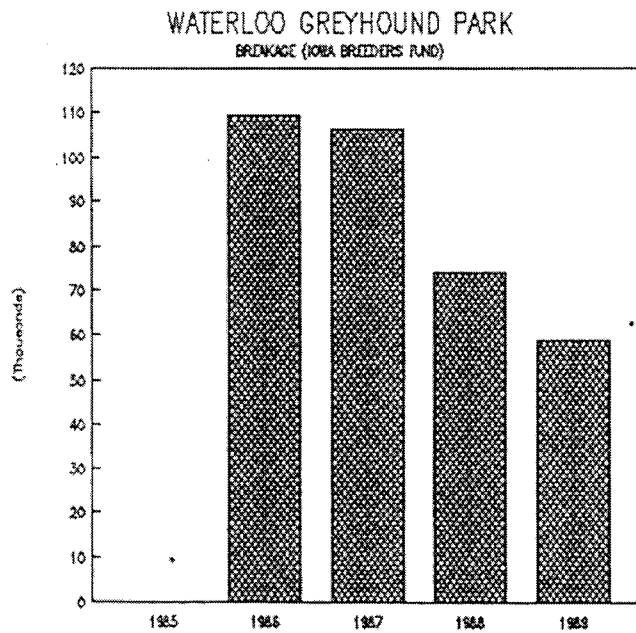
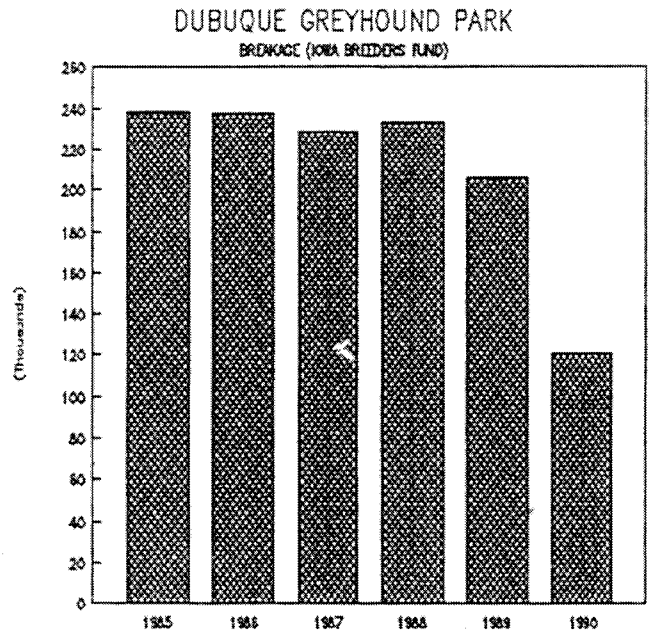
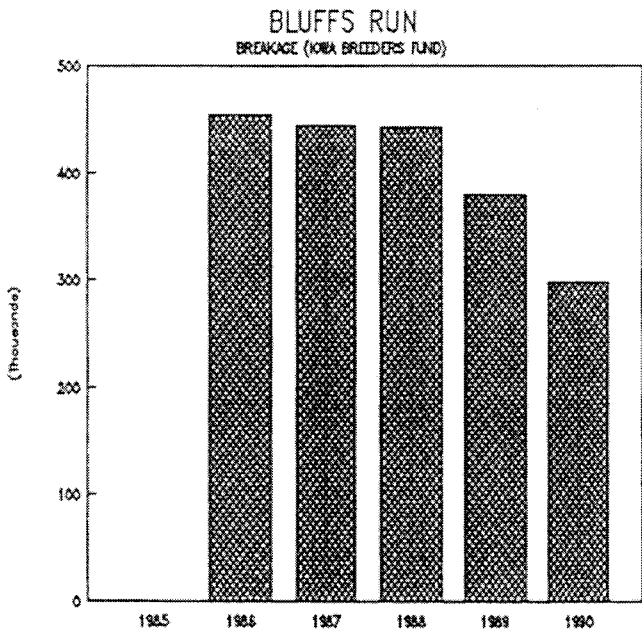
Waterloo Greyhound Park

1989-1990 Season

Breeder's Awards\$ 17,014.15
Supplements\$ 54,600.00
Iowa Stakes\$ 19,234.00
Carry-over\$ -0-

The remainder of the breakage at horse tracks is distributed as purse supplements to the owners of winning Iowa-bred horses.

The remainder of the breakage at greyhound tracks is divided, with 25%, funding a stakes race restricted to registered Iowa-whelped greyhounds, 2% Dog Promotion Fund and 73% distributed as purse supplements to the owners of winning Iowa-whelped greyhounds. The owners of winning Iowa-whelped greyhounds have earned purses equal to those offered anywhere in the United States.



FINANCIAL POSITION FOR PARI-MUTUEL

SOURCE OF REVENUE

During the reporting period, the Iowa Racing and Gaming Commission operated as a self-funded unit. In Iowa, monies are collected from the racing industry to pay for its own regulation. This money is deposited into a revolving fund controlled by the Racing and Gaming Commission and expenditures are made from that fund to regulate all aspects of the pari-mutuel racing industry in Iowa. During 1990, \$2,328,807 was received into the Iowa Racing and Gaming Commission's revolving fund, with anticipated revenues from unclaimed winnings in the amount of \$942,275. During this same period, the Racing and Gaming Commission expended \$1,755,683 for regulation of the industry and for research projects to enhance and improve the pari-mutuel industry in the state of Iowa.

Chapter 99D of the Code of Iowa provides several sources of revenue for the Iowa Racing and Gaming Commission revolving fund. The racing licensees are taxed at \$200 per day of operation; there is a \$.50 per patron tax imposed; licensees reimburse the Commission for lab fees; fees set by the Commission are charged for occupational licenses; and disciplinary fines set by the Commission are imposed upon those licensees.

Racing and Gaming Commission Operating Fund

Pari-mutuel Receipts	\$802,988
Occupational/Track Daily License Fees	\$279,923
Admission Tax	\$882,939
Fines	\$ 28,530
Statutory Reimbursements	\$334,427
Total Revenues to Commission	\$ 2,328,807
 BEGINNING BALANCE	 \$1,060,299
 TOTAL REVENUES	 \$3,389,106
 TOTAL EXPENDITURES BY COMMISSION	 \$2,136,946
DCI Appropriation	\$217,074
 Carryover for Future Expenses/Industry Research	 \$191,861
 Receipts to State and Local Governments	
State pari-mutuel tax	\$8,813,436
Uncashed Pari-Mutuel tickets to state	\$942,275
 TOTAL REVENUE TO STATE	 \$9,755,711
TOTAL REVENUE TO LOCAL GOVERNMENT	\$2,001,759

STATEMENT OF EXPENDITURES FOR PARI-MUTUEL

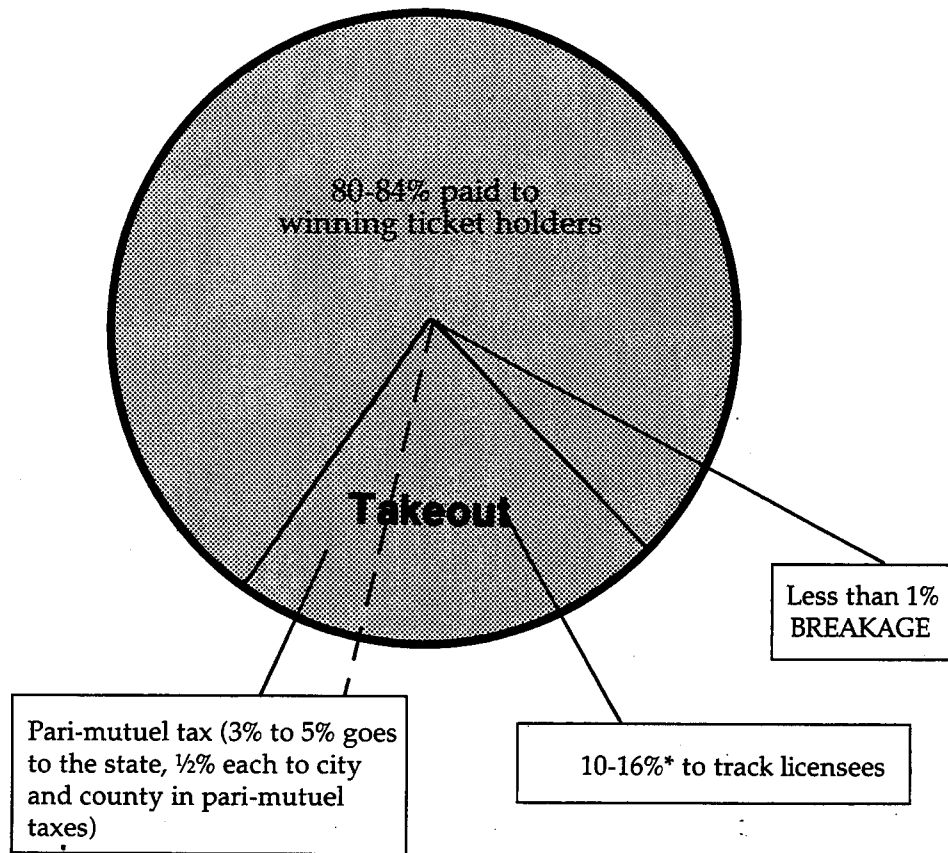
January 1 to December 31, 1990

Payroll	\$ 801,544
Professional Services	
Veterinarian	\$ 203,263
Laboratory	\$ 473,653
Criminal History Checks	\$ 51,100
Consultants	\$ 6,508
Travel	\$ 37,613
TOTAL SERVICE EXPENDITURES	\$1,573,681
Office Supplies	\$ 64,918
Printing	\$ 3,333
Communications	\$ 12,031
Rentals	\$ 697
Outside Services (General)	\$ 24,994
Data Processing	\$ 22,242
Equipment	\$ 5,993
Public Relations	\$ 7,318
Reimbursements to Other State Agencies	\$ 40,476
TOTAL OFFICE EXPENSES	\$ 182,002
RESEARCH FUNDS	
Iowa State University College of Vet Medicine	\$ 100,000
Equine/Canine Drug Research	
PAR-MUTUEL TAX MONEY OF GENERAL FUND	\$ 281,263
TOTAL EXPENDITURES	\$2,136,946

STATEMENT OF OCCUPATIONAL GREYHOUND LICENSE FEES

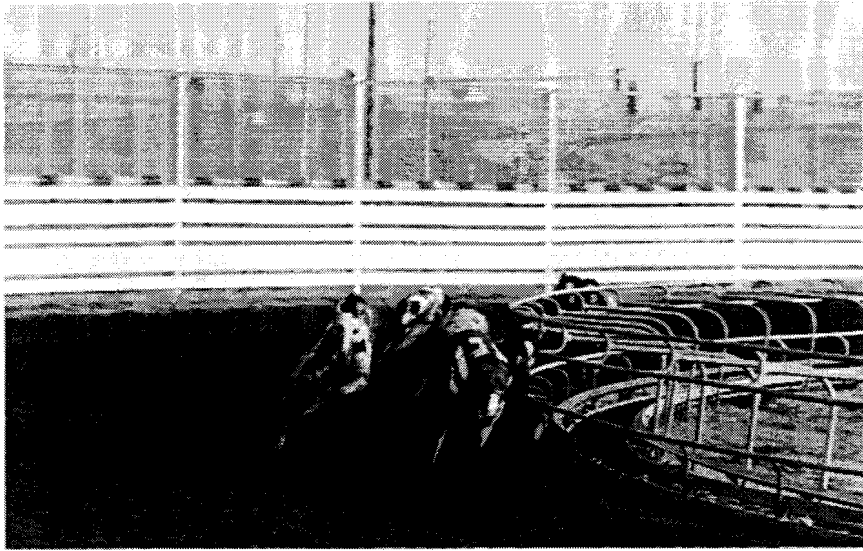
Concession	748	@	5.00	3740.00
Mutuels	426	@	5.00	2130.00
Security	120	@	5.00	600.00
Parking/Admissions	142	@	5.00	710.00
Maintenance	127	@	5.00	635.00
Totalizator	23	@	5.00	115.00
Kennel Helper	132	@	5.00	660.00
Lead Out	226	@	5.00	1130.00
Administration	64	@	5.00	320.00
Miscellaneous	4	@	5.00	20.00
Announcer	10	@	10.00	100.00
Veterinarian	4	@	10.00	40.00
Owners	1027	@	10.00	10,270.00
Officials	37	@	10.00	370.00
Trainers	80	@	10.00	800.00
Asst. Trainers	84	@	10.00	840.00
Board Members	35	@	10.00	350.00
Asst. Racing Secretary	6	@	10.00	60.00
Chart Writer	4	@	10.00	40.00
Track Superintendent	2	@	10.00	20.00
Partnerships	125	@	10.00	1250.00
Authorized Agent	2	@	10.00	20.00
Miscellaneous	1	@	10.00	10.00
Trainer/Owner	2	@	20.00	40.00
Mutuel Manager	3	@	20.00	60.00
Asst. Manager	2	@	20.00	40.00
Racing Secretary	4	@	20.00	80.00
Concession Operator	5	@	20.00	100.00
Manager	3	@	20.00	60.00
Kennel Owner	52	@	20.00	1040.00
Corporations	34	@	20.00	680.00
TOTAL LICENSED	3534			26,330.00
Duplicate Licenses	90	@	5.00	450.00
<hr/>				
TOTAL OCCUPATIONAL LICENSES	3624			26,780.00

IOWA'S WAGERING DOLLAR



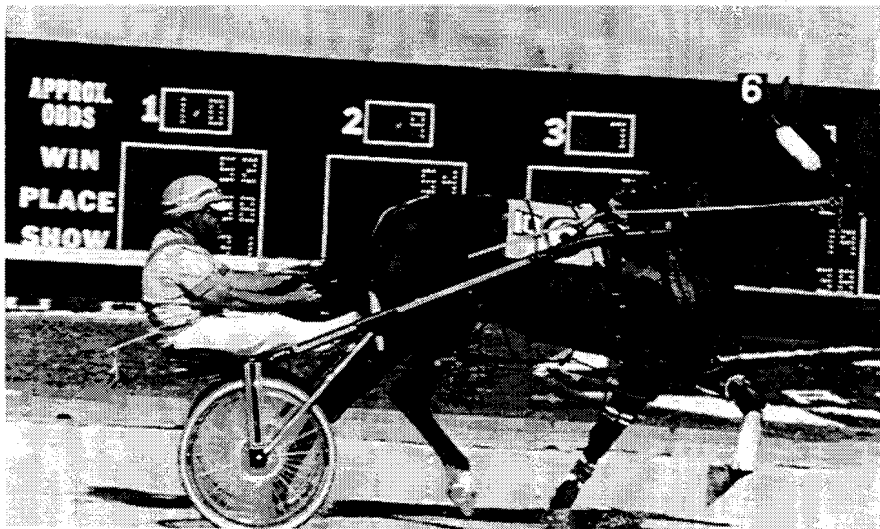
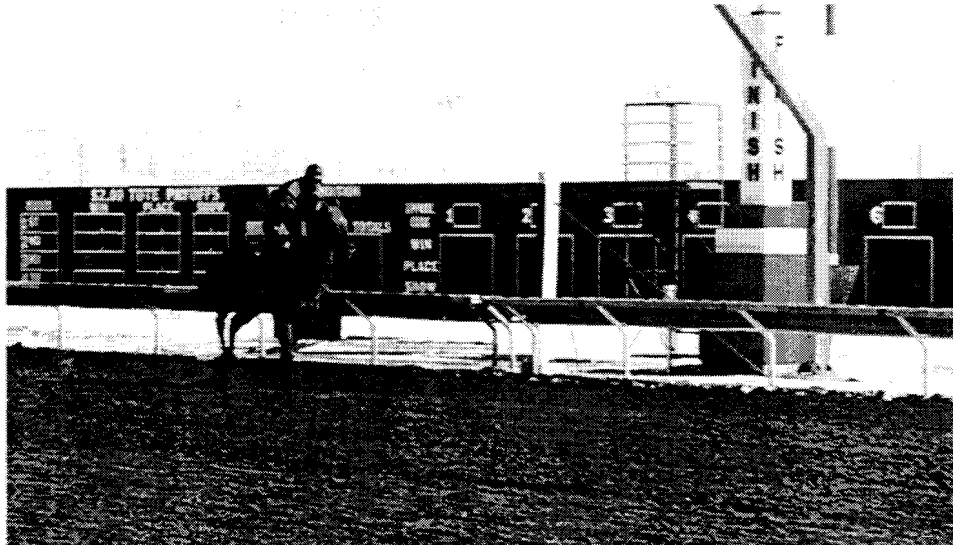
*Actual percentage depends on type of wager. The takeout is 16% on win, place and show wagers. The Racing and Gaming Commission may authorize the licensee to take out 16-20% on other wagers. Four to six percent is paid out in pari-mutuel taxes, as shown. The remaining 10-16% goes to the track licensee for purses, operating expenses, debt retirement and distribution to local charities, community betterment projects, scholarships, etc.

The Breakage (the odd cents by which the amount payable on each dollar wagered in a pari-mutuel pool exceeds a multiple of ten cents) is distributed to the breeders of Iowa-foaled horses and Iowa whelped dogs.



Greyhound racing at:
 Dubuque Greyhound Park — Dubuque
 Bluffs Run — Council Bluffs
 Waterloo Greyhound Park — Waterloo

Thoroughbred/Quarterhorse
 racing at Prairie Meadows
 in Altoona



Harness Racing at Prairie Meadows
 in Altoona

FINANCIAL POSITION FOR RIVERBOAT GAMBLING

July 1 to December 31, 1990

REVENUES

General Fund	\$100,000.00
Special Treasury Fund	\$100,000.00
TOTAL REVENUES	\$200,000.00

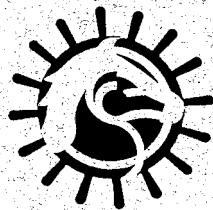
EXPENDITURES

Payroll	\$ 59,280.00
Travel	\$ 12,244.00
TOTAL SERVICE EXPENDITURES	\$ 71,524.00

Office Supplies	\$ 104.00
Printing	\$ 224.00
Communications	\$ 20.00
Outside Services (General)	\$ 40.00
Equipment	\$ 5,291.00

TOTAL OFFICE EXPENSES	\$ 5,679.00
------------------------------------	--------------------

TOTAL EXPENDITURES	\$ 77,203.00
---------------------------------	---------------------



**IOWA STATE
RACING AND GAMING COMMISSION
Lucas Building
Des Moines, Iowa 50319
515-281-7352**

Publication Date
11/91